



THE FLORIDA SURVEYOR

August 2020
Volume XXVIII, Issue 8

IN THIS ISSUE

Fort McClellan Survey
NSRS Modernization News
Surveyors in Government

800.342.9238
www.Lengemann.us
Since 1962

 **TOPCON**

FC-6000

Lengemann
Topcon Master Dealer

FSMS



MEMBERSHIP BENEFITS

Brand Awareness

For unique and creative branded products! Send your logo and receive a free sample!

(850) 510-0273
www.BurkeBuchanan.com

Rental Car Discounts

Enjoy great savings every time you rent from Alamo Rent A Car, Enterprise & National.

Contact FSMS office for the link to discount.
(850) 942-1900

Copier Services

Call Scott Tharpe at Advanced Business Systems for member discounts on all office automation & IT needs, including all Canon, Toshiba, Savin, HP, & Kyocera. We can ship anywhere in the U.S.

(850) 222-2308
www.a-b-s.com

Cyber Security

Trulight is an advisor for tech strategy. We show organizations how to highlight areas of opportunity, while minimizing areas of risk. Key to minimizing risk, is a well defined and implemented cyber security strategy and plan.

Jonathan Kilpatrick
Jonathan.Kilpatrick@trulightconsulting.com

Payroll Services

For all your payroll needs, call Philip Browning.

(850) 224-2439
www.NorthFloridaPayroll.com

Insurance

Rogers, Gunter, Vaughn Insurance (RGVI)/HUB Florida has been the endorsed agent by FSMS for over 35 years, providing specialized insurance for Surveying, Mapping, Architectural, and Engineering Firms. RGVI/HUB can assist you and your firm in obtaining all lines of insurance.

Agent: Russ Browning
1117 Thomasville Road, Tallahassee, FL 32303
Office: (850) 205-0559
Mobile: (850) 545-5219
Russ.Browning@hubinternational.com

Background Checks

Researcher's Associates has been in business for 40 years, providing background checks for employers, insurance companies & attorneys. We will be happy to tailor our services to meet your needs.

Mary Gay
Rainc01@aol.com
(850) 893-2548

Florida Surveying & Mapping Society
1689 Mahan Center Blvd., Suite A
Tallahassee, FL 32308

Phone: (850) 942-1900
Fax: (850) 877-4852
www.fsms.org

TABLE OF contents

4

NSRS MODERNIZATION
NEWS

7

FROM THE ARCHIVES

II

FORT MCCLELLAN
SURVEY



Cover Photo by: Bryan Goff

PRESIDENT'S
message **2**

SURVEYORS IN
government **9**

COMMITTEES
17

ADMIN
staff **19**

SUSTAINING
firms **23**

EDUCATION
COURSE
information **28**

CHAPTER
presidents **33**

DISTRICTS &
directors **34**

ADDITIONAL
information **35**

2020 FSMS officers



President-Elect

Hal Peters
(352) 547-3086
halpeters@yahoo.com



Vice President

Jim Sullivan
(561) 687-2220
Jim.Sullivan@wginc.com



Secretary

Joe Perez
(321) 230-4420
jlperez@pesengsurv.com



Treasurer

Bon Dewitt
(352) 392-6010
bon@ufl.edu



Immediate Past President

Dianne Collins
(863) 937- 9052
dcollins@collinssurvey.com

PRESIDENT'S message

First off, I'd like to thank everyone who participated in our annual General Business Session last month. Although the public health challenges have impacted all of us, the regular business of the surveying world is continuing right on. The demand for surveying work remains high, and the industry need for survey technicians and licensed surveyors remains strong even in the face of historically high unemployment.

On the licensing side, last week the Board of Professional Surveyors and Mappers approved 12 people to sit for the state licensing exam and another 7 for the NCEES Fundamentals of Surveying test. Even in a season marred by pandemic, the pipeline for licensees is continuing to flow. BPSM is also currently working to expand the availability of the Florida Jurisdictional exam into remote testing centers. Soon it should hopefully be possible for people to take the state test in the same kinds of testing centers where one can take standardized tests such as the GRE. This kind of solution will reduce the burdensome time and financial costs of travel and lodging for license candidates going forward.

While we are on the topic of workforce, I'd like to expand upon a topic of discussion that arose at the General Business Session. At the January Broward Chapter meeting, I had the pleasure of meeting Maria Barboza, who is a licensed surveyor originally from Venezuela. Maria has lived here for a few years and is working on getting her license here in Florida. At that time, Maria had just done a Spanish language webinar on navigating the process for surveying licensure in Florida for the Venezuelan surveying society.

For those who are unaware, surveying is taken very seriously throughout Latin America and many of their collegiate programs for surveying are technically quite rigorous. Economic drivers cause a significant number of educated and experienced surveyors to legally immigrate to the U.S. for better opportunities. Until I talked with Maria, I was unaware of the magnitude of a gap in this particular workforce chain.

As it happens, between insufficient networks to connect people to employers and the natural challenges of moving far from home to a place that doesn't share a native language, a significant number of qualified surveyors are here in Florida but are not working in the industry. This is a gap in the workforce chain which we must close.

To this end, on Saturday, September 19, Maria Barboza will be presenting an informational webinar in Spanish on navigating the licensing process for those with foreign credentials. For folks who have surveying skills but are not yet connected with an employer, we will be encouraging them to prepare resumes in advance of the seminar. If you are an employer who is interested in this endeavor, be aware that this event is coming soon and that more information will be forthcoming.

Until next month, stay safe and I'll hope to see you at a virtual chapter meeting!



President

Don Elder

(850) 354-9665

donelderpsm@gmail.com



Craven Thompson & Associates, Inc. (CTA) is a well-respected and prosperous Engineering, Survey, GIS and Landscape Architecture firm in South Florida since 1961 and recruiting the following positions:

We are currently looking for both senior level & newly licensed Surveyors and Mappers for our Professional Survey and Project Manager positions.

These individuals will join the other three PSM's in the company and:

- maintain ongoing projects
- continue survey and engineering contracts
- assist in proposals and cost estimates
- develop new skills and enhance your existing ones
- work with our advanced technology tools

You'll be connecting with and building new relationships with our long-term clientele and will help in maintaining them.

You'll also be an active participant in the Florida Surveying and Mapping Society as we fully support them. Your license and FSMS Membership are paid for by the company.

We offer a very generous benefits package along with a great team of long-term employees which says a lot about the company.

Must have a valid driver's license with an acceptable motor vehicle record, ability to pass a drug test, and obtain security clearance for working at Port, Airport, and Public-School facilities.

Please contact:

Richard D. Pryce, PLS/PSM, VP Survey & GIS, Craven Thompson & Associates, Inc.

3563 NW 53rd St., Fort Lauderdale, FL 33309, (954) 739-6400

rpryce@craventhompson.com

Issue 21 July 2020



NSRS Modernization News

For all issues of **NSRS Modernization News**, visit:

geodesy.noaa.gov/datums/newdatums/TrackOurProgress.shtml

Delay

As mentioned in last month's special issue of the NSRS Modernization News, the roll-out of the modernized NSRS is being delayed beyond 2022. More details are available on our [New Datums](#) page.

Geospatial Data Act Update

The Geospatial Data Act of 2018 (GDA) codified many aspects of the management of U.S. National Geospatial Data Assets (NGDA) by the Federal Geographic Data Committee (FGDC). For Geodetic Control, this includes the NOAA CORS Network (NCN), GRAV-D aerogravity, geoid height models, and the extensive passive control database. This was managed previously by Executive Orders and the OMB Circular A-16. The GDA codified this into public law and requires that NGDA Geodetic Control datasets be subject to biennial audits by the Department of Commerce Inspector General and reports to Congress. Annual reports are still required. In particular, the NCN will provide access to and maintenance of the modernized NSRS. Hence, implementation of the GDA is shaping how the NSRS Modernization will be realized now and in the future. It is evolving, so look for updates at later dates.

Progress in ongoing Projects

There are currently **24 ongoing projects** directly related to NSRS modernization around NGS.

Here is a highlight from one:

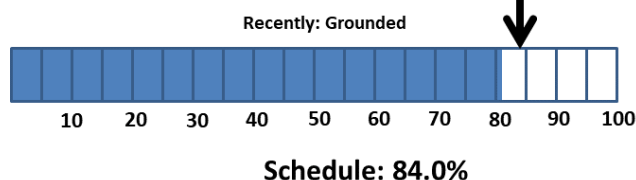
Annual xGEOID production (Project Manager: Dr. Yan Wang)

NGS is working closely with the Canadian Geodetic Survey (CGS) to compute, and jointly release xGEOID20, the first jointly computed geoid model between the two agencies. The scheduled release of this model is planned for September 15, 2020. The joint xGEOID20 model will be created by blending two preliminary geoid models, one computed by NGS and one computed by CGS.

While initial tests indicate that the CGS and NGS approaches to geoid modeling agree at the 2 cm (overall) for the entire North American region, there are areas of significant disagreement remaining.

Therefore, **NGS will not be releasing an xGEOID21 model next year**. Rather, the entire year will be spent in a collaborative research effort with our CGS colleagues in an attempt to drive all remaining disagreements between methods down to 1 cm (RMS) and 10 cm (max) between models, before blending into an xGEOID22 model in 2022.

GRAV-D Progress Last Quarter: **Steady at 0.0% to 81.6% Behind** Schedule!



FROM THE



ARCHIVES



COMPREHENSIVE EVERGLADES RESTORATION PLAN GEODETIC VERTICAL CONTROL PROJECT UPDATE

by Howard Ehmke

Editor's Note: *CERP: What Is It?* which appeared in July issue of *The Florida Surveyor* was also written by Howard Ehmke

In June, the Geodetic Vertical Control Project's Project Delivery Team (PDT) met in West Palm Beach, Florida at the South Florida Water Management District (District) Headquarters.

Mr. Dave Zilkoski gave a two-hour presentation on the North American Vertical Datum of 1988 (NAVD 88). Questions were asked throughout the presentation. Some of the major questions covered the Geoid Height issues and the Gravity zones. (See the power point presentation at www.ngs.noaa.gov.)

Mr. Charles Fales, Project Manager, U.S. Army Corps of Engineers, gave a presentation on the Comprehensive Everglades Restoration Plan (CERP) Geodetic Vertical Control Project, including scheduling and budget requirements. (See the PowerPoint presentation at www.evergladesplan.org.)

Mr. Dave Robar, of the Corps of Engineers, gave a presentation on the contracting status, including the number of contractors and which lines they have contracted. The current contractors are:

- a. L.D. Bradley
- b. EMC
- c. Charlie Foster & Associates
- d. Morgan and Eklund
- e. GCY Inc./Martin County

Mr. Ronnie Taylor, of the National Geodetic Survey, gave a contractor status report.

The team discussed the possible connection of the spur line within the Everglades National Park. The discussion included the need to see about connecting the spur line in Flamingo to the West Coast of Florida to strengthen the net. It seemed beneficial, however, the National Park service will not allow monumentation or people within the park.

A discussion arose on the modeling problems that the NAVD 88 datum will cause. Generally the issue is called the "Conversion from NGVD 29 to NAVD 88". However, it is not a conversion. The entire modeling will be done in NAVD 88. Physical ties will be made at those stations where historical data needs to be applied. The reason it is not a conversion is the NGVD 29 Datum was warped to fit the Atlantic Ocean and the Gulf of Mexico. The warp is not regular nor can it be applied in one direction. The warping was generally from east to west. Depending on which line was used, the results would vary if tied to another line. NAVD 88 however was not warped and difference in elevations are in relation to themselves and the common starting point of the datum.

The team also discussed issues related to the misunderstanding of the NAVD 88 Datum and what it means to the public. Team members told of personal experiences with landowners who were adamant concerning the elevation of their land. It is hard to explain to the public that there

EXHIBIT A

SURVEY	AE	ROUTE MILEAGE	RECON [MILES]		MONUMENTATION [MILES]		LEVELING [MILES]		PROCESSING % COMPLETE	SUMMARY		
			COMPLETED	REMAINING	COMPLETED	REMAINING	COMPLETED	REMAINING		NTP	% COMPLETE	DUE
01-138	LDB	168	132	36	91	77	80	88	40%	10-May-01	50%	06-Dec-01
01-140	EMC	69	69	0	69	0	69	0	85%	11-May-01	98%	08-Nov-01
01-141	CFA	100	100	0	100	0	52	48	50%	08-May-01	63%	30-Oct-01
01-142	EMC	95	95	0	95	0	32	63	25%	11-May-01	48%	07-Nov-01
01-170	CFA	95	0	95	0	95	0	95	0%	10-May-01	0%	01-Nov-01
01-171	MEK	95	95	0	0	95	0	95	0%	21-Jun-01	7%	11-Jan-02
01-172	LDB	64	64	0	34	30	11	53	15%	12-Jun-01	29%	05-Nov-01
01-173	EMC	64	64	0	64	0	0	64	15%	21-Jun-01	26%	17-Dec-01
01-174	MEK	35	35	0	35	0	0	35	10%	21-Jun-01	25%	22-Oct-01
TOTALS		785	654	131	488	297	244	541				
TOTAL PERCENT COMPLETE			RECONNAISSANCE 83%		MONUMENTATION 62%		LEVELING 31%		PROCESSING 28%	OVERALL 40%		

land has not changed, however the datum or benchmark where by the elevations are measured from has changed. The public needs to be educated on the new datum. This would include people within the insurance industry, lending institutions and real estate field. Two funding sources mentioned in government were Federal Emergency Management Agency and the USGS quads maps.

It was suggested that a video be made explaining the new datum. A suggested funding source was the National Sciences Foundation. They could be contacted to make a "documentary to educate the public".

Mr. Chappy Young talked about the Vertical control work GCY Inc. is doing for Martin County.

In July a meeting was held with the National Geodetic Survey to discuss progress and specifics of the project.

The District and Corps of Engineers will look into closing the gap between the Levee 28 spur line to the South and the Levee 28 Interceptor loop to the north.

The National Park Service's surveyor has already run a level line in the Everglades National Park. Efforts will be made to contact the surveyor for copies of his field notes and inclusion into the new system.

Structure vertical control monumentation will be handled in the same manor as tidal benchmark stations.

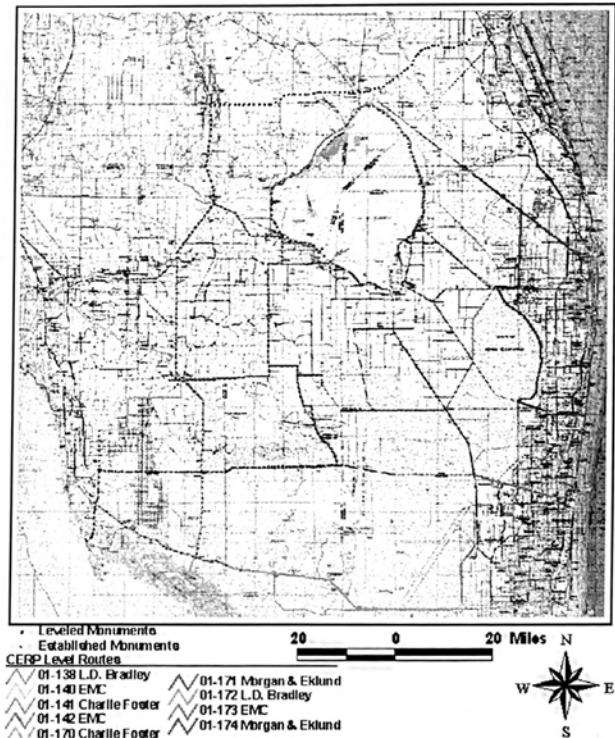
It is estimated that the GPS work will start in late November or December of this year.

A presentation on CERP was given to the Indian-River Chapter in July and is scheduled to be given to the Broward Chapter of the FSMS in August.

Attached Exhibit "A" is a progress chart for the Geodetic Vertical Control Project of CERP and Exhibit "B" is a map showing that progress.

EXHIBIT B


CERP Geodetic Vertical Control Survey 01 August 2001 Progress



SURVEYING WEBSITE ADDRESSES

FSMS www.fsms.org
 ACSM www.survmap.org
 NSPS www.survmap.org
 NCEES www.ncees.org
 NOAA <http://161.55.104.103/>
 FEMA www.fema.gov
 LABINS www.labins.org
 POB www.pob.com
 GSS www.GSSGeomatics.com

UF Geomatics Program www.geomatics@ce.ufl.edu
 UF Geomatics Student Association www.gsa@ce.ufl.edu
 National Geodetic Survey www.ngs.noaa.gov
 Virtual Museum of Surveying www.surveyhistory.org
 National Oceanic Atmospheric Administration
 Engineering Ministries International www.emisua.org
 Florida DBPR BPSM www.state.fl.us/dbpr/
 Florida Legislature Online Sunshine www.leg.state.fl.us
 GSS Geomatics Info Center GSSGeomatics.com



I must start this month's article by prefacing that with each of my travels out west that I am always in awe of what the early explorers and survey expeditions that went through to explore and map unknown lands. These early government surveyors traversed the unknown to define the expanding domain of the United States of America. I was able to drive across the country, over 2,300 miles, along the Lewis and Clark Trail in just three days, stopping short of the west coast. I stopped at the Rockies, which they continued through and beyond to what is now the Washington Coast. That expedition took them nearly three years, just amazing!

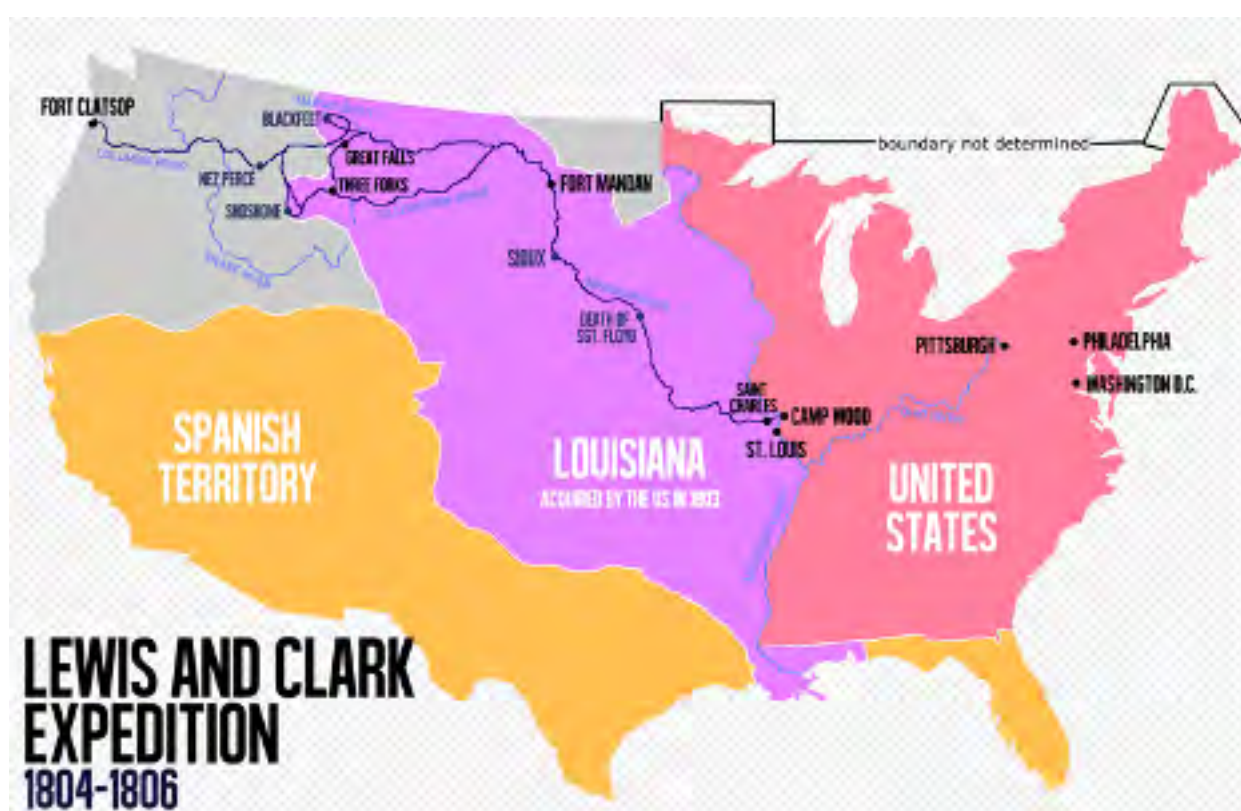
If you have not traveled west of the Mississippi River, I implore you to do so! There is so much beauty out west to experience!

Onto official business, in this month's article I am going to provide an update on what has transpired with discussions of a rewrite of Florida Statutes Chapter 177. So far there has been input from numerous individuals and from three Chapters of FSMS. We appreciate the input, from which we are finding there is wide disagreements in what should be proposed. In the more rural counties the importance of section information is more vital than that of South Florida that is heavily developed and mostly platted. From their point of view showing the section through the plat is useless and waste of resources. The one thing that must be considered is that the public is protected as that is our goals as not only government surveyors, but surveyors in general. We are to be the independent body that interprets the documents and legal instruments and put them on the ground. The purpose of those legal instruments is to convey rights to property and show any encumbrances against real property.

Photo by: David Beale

SURVEYORS IN government

By: Richard Allen,
PSM, CFM



This will be a juggling act, especially when the issue comes up that not only do surveyors have input into this but so do attorneys, title professionals, politicians, developers and everyone else that deals with real property. I look to us all to provide feedback and guidance to update the rules to better protect the public and bring requirements up to date. This is not to add additional useless language or requirements that have no purpose being on a plat. As discussed previously this is planning and zoning items that could potentially change, like setbacks and landuse codes. These are considerations that must be made when anything is added or removed from the existing statutes. This is also to address issues that legislators have made to parts of 177 because of changes to other statutes, such as the property information report. If you are unaware about a property information report, you need to educate yourself on that.

Until next time my friends.

Sincerely,
Richard Allen

You can reach me at Richard.Allen@orlando.gov or 407.246.2788.

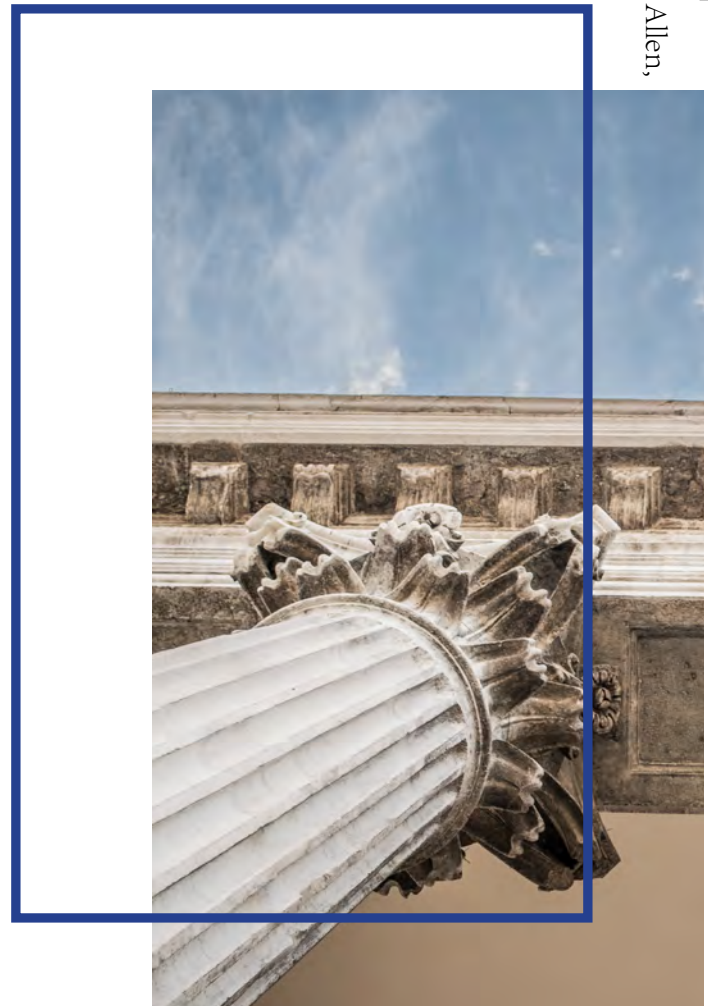


Photo by: Macu Ic

Fort McClellan Survey

My name is Jeff Clendenning I enlisted in the U.S. Army in 1987 as a heavy construction equipment operator. I was stationed at Fort McClellan from 1987-1994. I met my wife to be in 1987 and we married in 1988. We have two boys, the oldest will be a junior at Auburn in the fall 2020. The youngest will be a senior at Weaver, AL. In the fall of 1994 I was employed with the Calhoun County Commission in the Engineering Department. In 2005 I became a licensed Land Surveyor in the State of Alabama and became the County Surveyor for Calhoun County. In the last 25 plus years I have thoroughly enjoyed working in the Engineering Department with great people and a wonderful environment.

In December 2018 I was approached about doing a survey of some land on the old Fort McClellan Army Base that was going to be given to the Calhoun County Commission by the MDA (McClellan Development Authority) for the purpose of horse trails. I was very interested and looked forward to the challenge of a 900 acre survey. What I didn't realize was the history that I would learn and experience.

On March 17th 1917, the Federal Government acquired 18,952 acres of this land for \$247,000. On April 6, 1917, Congress declared war on Germany and it has been suggested that without it "it's likely that Fort McClellan as we remember it would never have been born". The Department of War formally established Camp McClellan on July 18th 1917, named in honor of Major General George B. McClellan, General-in-Chief of the Union Army, 1861–1862. Camp McClellan was one of 32 mobilization camps formed to quickly train men for World War I.



Like the other National Guard mobilization facilities, Camp McClellan used hastily constructed wooden buildings for headquarters, mess halls, latrines, and showers, with rows of wooden-floored tents for housing the troops. There were 26 blocks of training areas composed of central buildings and tents, each designated for a particular function (infantry, artillery, ammunition, etc.). Overall, about 1,500 buildings were built, including a base hospital



with 118 buildings. The Anniston city limits at that time was a circle 1.3 miles in diameter. The Camp McClellan reservation was approximately a square some 3.0 miles on each side, adjoining the northeast quarter arc of the city limits and extending northward along the Anniston to Jacksonville, Alabama, pike. The training blocks were in the northern part of the reservation. An existing Southern Railway line was close by the western boundary; a terminal facility called Remount Depot was built near the Southwest

In 1941-1944 about \$6.5 million in Federal Funding was made available for construction to accommodate quarters and other facilities for up to 50,000 military personnel at Fort McClellan. Overall improvements included 74 miles of new roads, sewage facilities for 50,000 persons, a huge general hospital with 80 wooden buildings connected by 4.5 miles of catwalks, 5 theaters plus an amphitheater seating 12,000 persons, 27 warehouses, and many ammunition-storage bunkers. Hundreds of five- and fifteen-man hutments, arranged in Company-level groups, were built for personnel being trained. Colonel John L. Jenkins was the Commanding Officer (1941-1944) during most of the construction period.

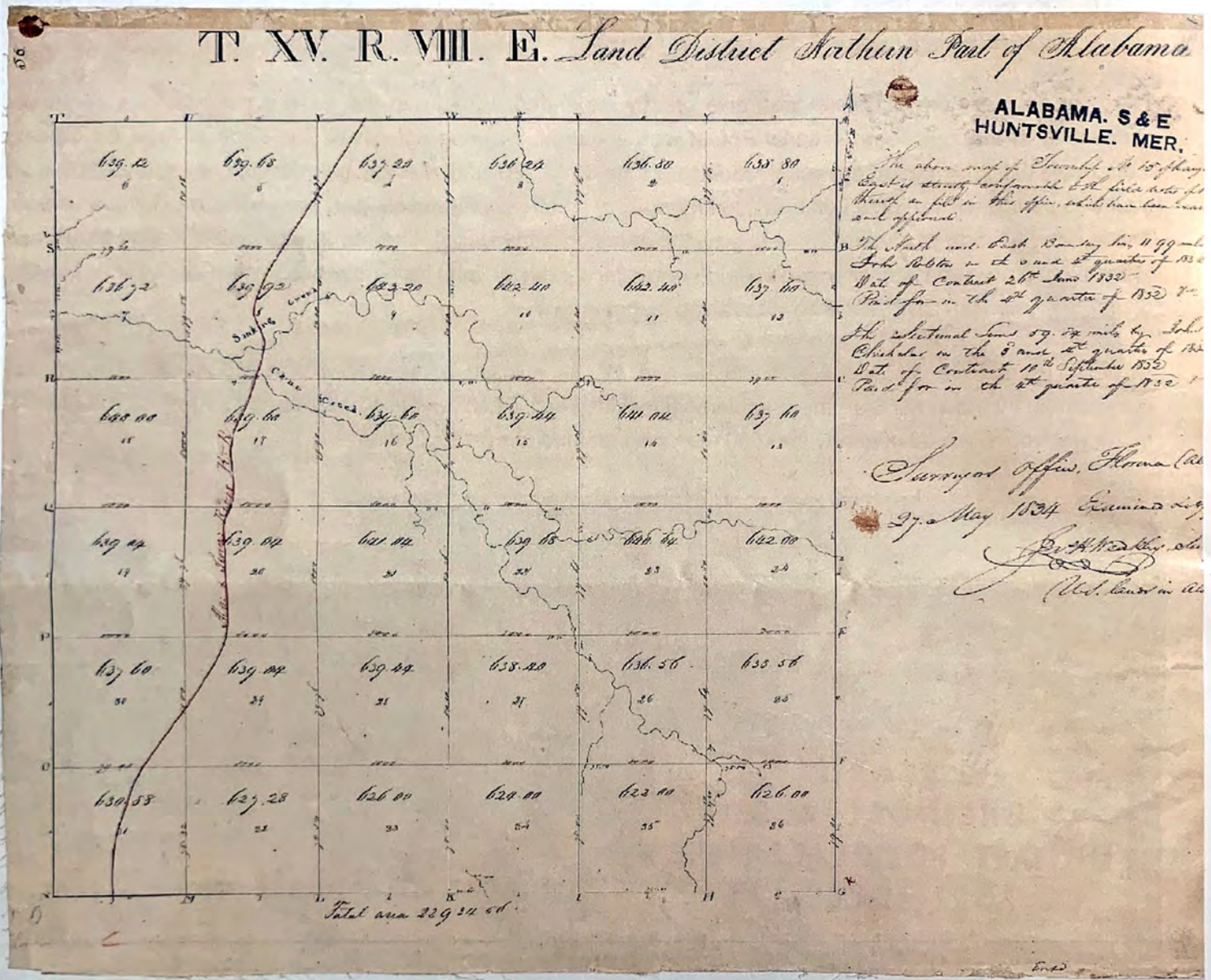
The land area of Fort McClellan was also greatly expanded. Directly to the east, a mountainous peninsula connecting to the Talladega National Forest was acquired, allowing access to this Federal Area for training maneuvers. This increased the reservation to a total of 42,286 acres. A few miles to the west, a 22,168-acre tract was purchased for \$675,000 and used for artillery and heavy mortar ranges, tank firing, and bivouac areas. This is directly north of another Army facility, the Anniston Army Depot. The range was initially called Morrisville Maneuvering Area and later changed to Pelham Range, named for John Pelham, a hero in the Confederate cavalry during the American Civil War, who was raised in that area.

At peak, there were officially 2,170 officers and 42,126 enlisted personnel at Fort McClellan. The station complement tripled in number; this complement included two detachments of the Women's Army Corps (WAC). In the war years, a total of nearly 500,000 men were trained at Fort McClellan.



(continued on page 8)

An Original Survey was conducted by the GLO (General Land Office) and completed in 1834 by James W. Weakley the Surveyor General. This survey established the section corners in the area of Fort McClellan and were monumented with vertical stones and witness trees.



"Fort McClellan Survey" by Jeff Clendenning was originally published in the Spring 2020 issue of *Turning Points* produced by Alabama Society of Professional Land Surveyors.

Reprinted with permission of their Executive Director, Jim Ranieri, MBA, MPH and the author, Jeff Clendenning.

I collected the data and read the original notes comparing them to the Weakley's notes. I was amazed at what I was reading, 20 men surveyed 38 sections in less than 5 months. On December 23, 1918 the post in Weakley's Notes Read:

On December 26th, 1918 they were back on the Federal building calibrating the 4 instruments they were about to use for the survey. As I researched further I found an image of Mr. Kimmell and part of the crew on the roof.

9



A. N. Kimmell and party on the roof of the Federal Building in Anniston, Alabama, May 1918. Left to right: unidentified, Hal D. Craig, Frank Constantine, unidentified, A. N. Kimmell, Thomas E. Hiester, Jim Quigley (?), and Arthur C. Buttrick.

This survey was a great lesson in documentation, field notes, record keeping, and pictures.

So we set out, we knew that the Northeast corner of section 27, T-15-S, R-8-E had been previously located. After converting the chains to feet and calculated the SW corner of section 27 with the bearing that Kimmell used, we headed out. We point staked our calculated point and started looking for a monument that was set exactly 100 years earlier. We found it undisturbed approximately 86' from our point. I have to admit it was pretty exciting. There was a blazed tree at this corner. It was not an original witness tree, the bearing, distance, and type did not match Kimmell's notes.





From there we headed East looking for a Quarter Corner. We knew the distance bearing and description of it in a slight valley. Our calculated point was within 100'.

After we collected all the original corners we could (12 in all), we cut out just over 900 acres for the McClellan Development Authority (MDA) to donate to Calhoun County for the purpose of horse trails. I am pleased to say that Calhoun County, Back Country Horsemen of Alabama and the MDA have been working together and have opened some trails. The County has also applied for a grant to construct a campsite within the 900 acres, with a possible opening in 2020.

I would like to thank the MDA, Calhoun County Commission, and the County Engineer for entrusting me with this project. It was one of the highlights of my career at Calhoun County, special thanks to the Engineering Department for all the help with this project, it definitely was a group effort.

<https://glorerecords.blm.gov/>

https://en.wikipedia.org/wiki/Fort_McClellan

Surveys and Surveyors of the Public Domain 1785-1975, Lola Cazier

Surveying Equipment at Historic Gaineswood Museum in Demopolis, Alabama



2020 Committees

Standing Committees	
Nominating Committee	Hal Peters
Membership Committee	Dodie Keith-Lazowick
Finance Committee	Bon Dewitt
Executive Committee	Don Elder
Education Committee	Dianne Collins
Annual Meeting Committee	Jim Sullivan
Legal Committee	Jack Breed
Strategic Planning Committee	Hal Peters
Ethics Committee	Joe Perez
Legislative Committee	John Clyatt
Surveying & Mapping Council	Randy Tompkins
Constitution & Resolution Advisory Committee	Eric Stuart

Special Committees	
Equipment Theft	Manny Vera
Awards Committee	Dianne Collins
UF Alumni Recruiting Committee	Russell Hyatt
Professional Practice Committee	Lou Campanile, Jr.



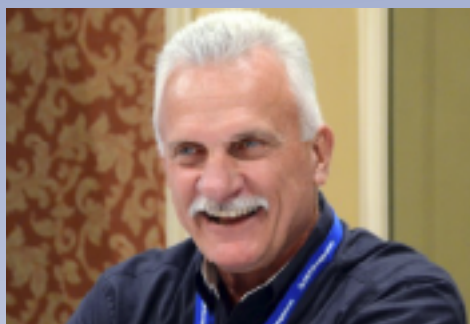
Liaisons

CST Program	Alex Jenkins
FDACS BPSM	Howard Ehmke
Surveyors in Government	Richard Allen
Academic Advisory UF	Bon Dewitt
FES	Lou Campanile, Jr.

Practice Sections

Geospatial Users Group	Matt LaLuzerne
-------------------------------	----------------

ADMINISTRATIVE staff



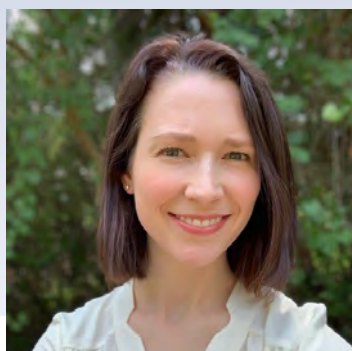
Executive Director

Tom Steckler
director@fsms.org



Education Director

Rebecca Culverson
education@fsms.org



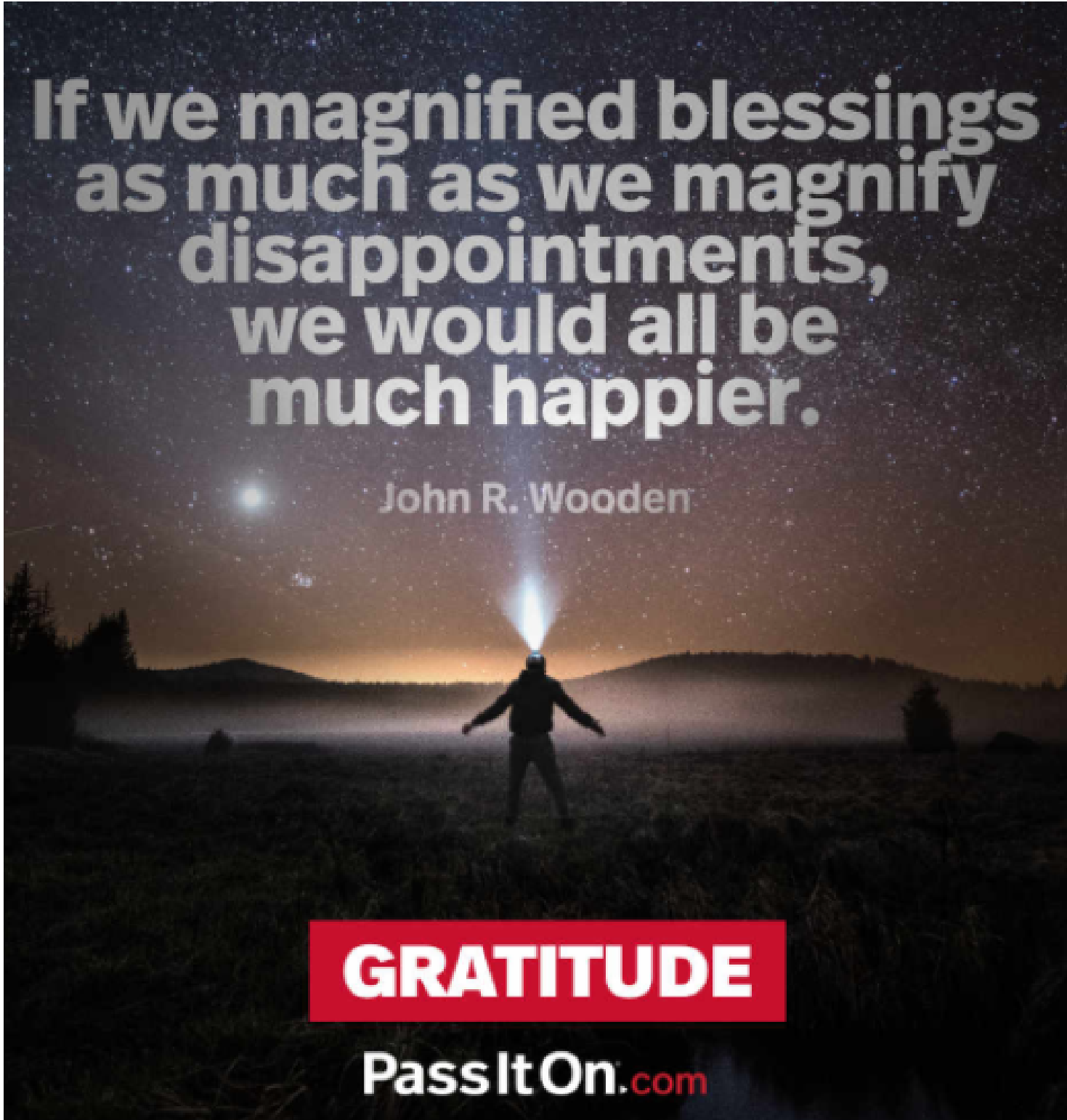
Communications Director

Laura Levine
communications@fsms.org



Regional Coordinator

Cathy Campanile
seminolecc84@gmail.com

A person wearing a headlamp stands in a dark field at night, with their arms outstretched. The headlamp beam illuminates the ground and the surrounding darkness. The background shows a dark landscape with trees and hills under a starry night sky.

If we magnified blessings
as much as we magnify
disappointments,
we would all be
much happier.

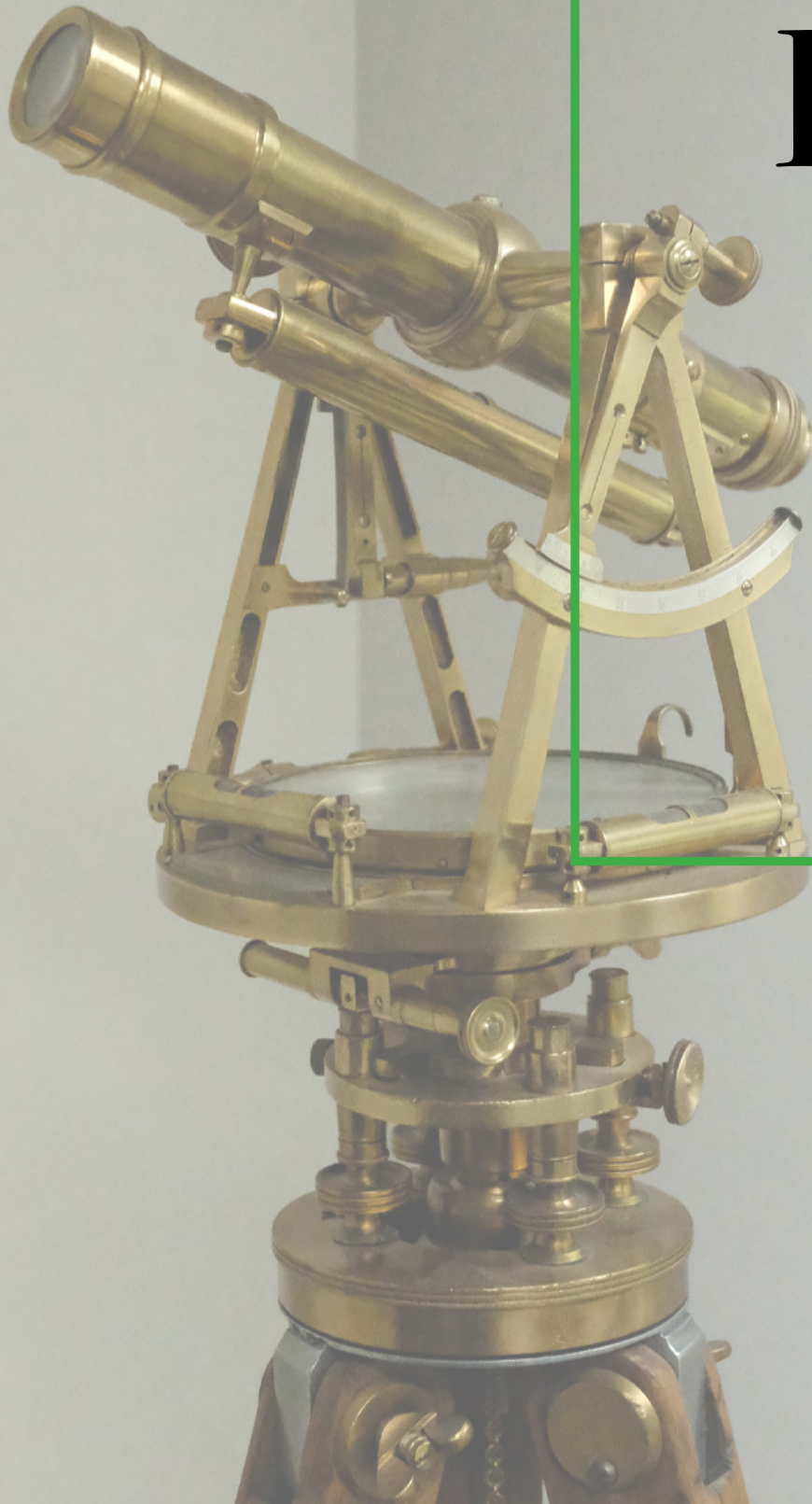
John R. Wooden

GRATITUDE

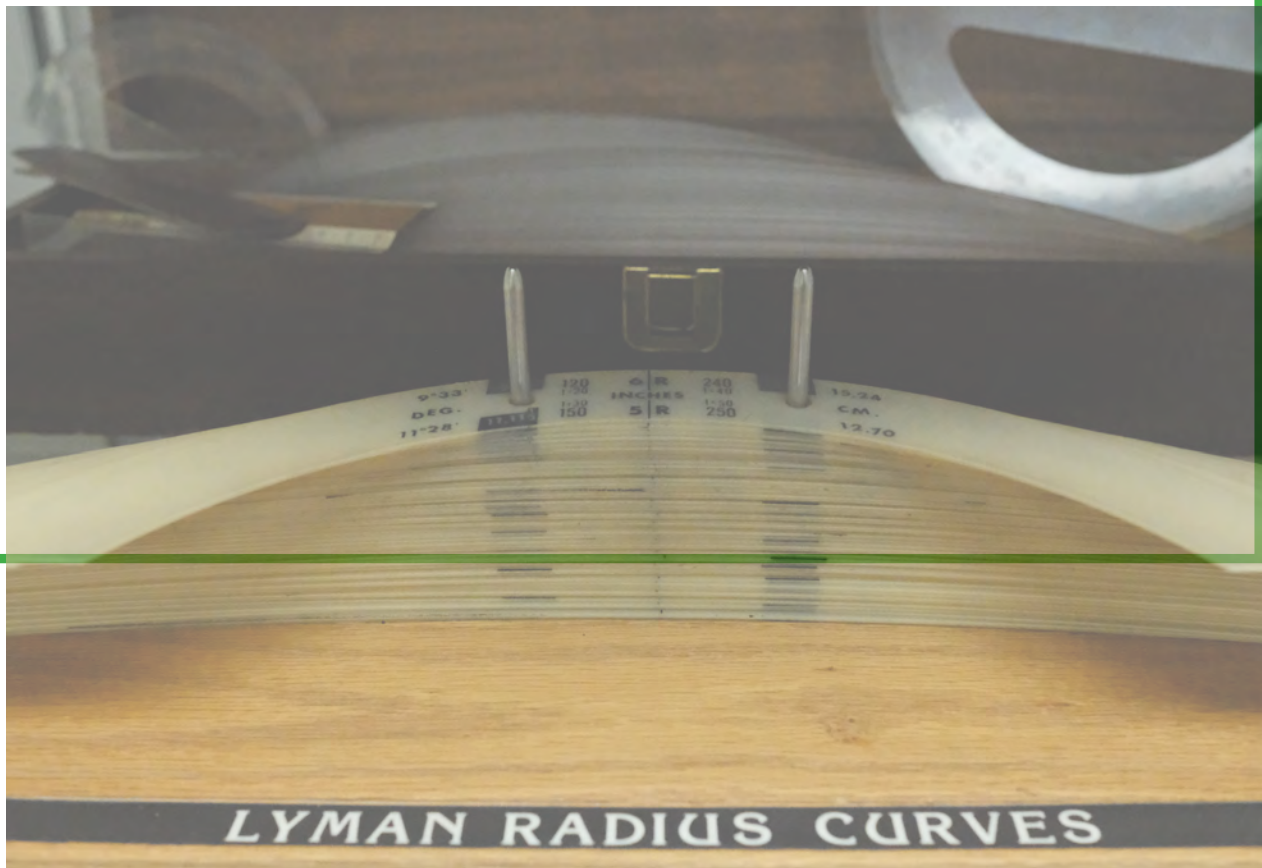
PassItOn.com

The Florida Surveyor is the official publication of the Florida Surveying and Mapping Society, Inc. (FSMS). It is published monthly for the purpose of communicating with the professional surveying community and related professions who are members of FSMS. Our award winning publication informs members eleven months of the year of national, state, and district events and accomplishments as well as articles relevant to the surveying profession. The latest educational offerings are also included.

2020 Firm



Sustaining s Directory



A	
Accuright Surveys of Orlando, Inc.	407-894-6314
Agnoli, Barber & Brundage, Inc.	239-597-3111
AIM Engineering & Surveying	239-332-4569
Allen & Company, Inc.	407-654-5355
Allen Engineering, Inc.	321-783-7443
AM Engineering, Inc.	941-377-9178
American Consulting Professionals, LLC.	813-435-2600
American Surveying, Inc.	813-234-0103
Ameritt, Inc.	813-221-5200
Arc Surveying & Mapping, Inc.	904-384-8377
Associated Land Surveying & Mapping, Inc.	407-869-5002
Avirom & Associates, Inc.	561-392-2594
Axis Geospatial SE, LLC.	386-439-4848
B	
Banks Engineering	239-939-5490
Barnes, Ferland and Associates, Inc.	407-896-8608
Barraco & Associates, Inc.	239-461-3170
Bartram Trail Surveying, Inc.	904-284-2224
Bello & Bello Land Surveying Corporation	305-251-9606
Benchmark Surveying & Land Planning, Inc.	850-994-4882
Berntsen International	608-443-2773
Betsy Lindsay, Inc.	772-286-5753
Biscayne Engineering Company, Inc.	305-324-7671
Boatwright and Durden Land Surveyors, Inc.	904-241-8550
Bock & Clark Corporation	330-665-4821
Bowman Consulting Group, Ltd.	703-464-1000
Brown & Phillips, Inc.	561-615-3988
BSE Consultants, Inc.	321-725-3674
Buchanan & Harper, Inc.	850-763-7427
Bussen-Mayer Engineering Group, Inc.	321-453-0010

C	
C & M Road Builders, Inc.	941-758-1933
Calvin, Giordano, & Associates	954-921-7781
Cardno, Inc.	407-629-7144
Carter Associates, Inc.	772-562-4191
Caulfield & Wheeler, Inc.	561-392-1991
Causseaux, Hewett & Walpole, Inc.	352-331-1976
Chastain-Skillman, Inc.	863-646-1402
CivilSurv Design Group, Inc.	863-646-4771
Clary & Associates, Inc.	904-260-2703
Clements Surveying, Inc.	941-729-6690
Collins Survey Consulting, LLC.	863-937-9052
Compass Engineering & Surveying, Inc.	727-822-4151
Compass Point Surveyors, PL	954-332-8181
Control Point Assocites FL, LLC.	908-668-0099
Cousins Surveyors & Associates, Inc.	954-689-7766
CPH, Inc.	407-322-6841
Craven-Thompson & Associates, Inc.	954-739-6400
Cross Surveying, LLC.	941-748-8340
Culpepper & Terpening Inc.	772-464-3537
Cumbey & Fair, Inc.	727-324-1070
D	
Dagostino Geospatial, Inc.	239-352-6085
DeGrove Surveyors, Inc.	904-722-0400
Dennis J. Leavy & Associates	561-753-0650
Dewberry	321-354-9729
DMK Associates, Inc.	941-475-6596
Donald W. McIntosh Associates, Inc.	407-644-4068
Donoghue Construction Layout, Inc.	850-763-7427

Douglass, Leavy & Associates, Inc.	954-344-7994
DRMP, Inc.	407-896-0594
DSW Surveying & Mapping, PLC.	352-735-3796
Duncan Parnell	407-601-5816
Durden Surveying & Mapping, Inc.	904-853-6822
E	
Echezabal & Associates, Inc.	813-933-2505
ECHO UES, Inc.	888-778-3246
Eda Engineers-Surveyors-Planners, Inc.	352-373-3541
E.F. Gaines Surveying Services, Inc.	239-418-0126
Eiland & Associates, Inc.	904-272-1000
Element Engineering Group, LLC.	813-386-2101
Engenuity Group, Inc.	561-655-1151
Engineering Design & Construction, Inc.	772-462-2455
England, Thims & Miller, Inc.	904-642-8990
ER Brownell & Associates, Inc.	305-860-3866
ESP Associates	813-295-9024
ETM Surveying & Mapping	904-642-8550
Exacta Land Surveyors, Inc.	305-668-6169
F	
First Choice Surveying, Inc.	407-951-3425
Florida Design Consultant, Inc.	727-849-7588
Florida Engineering & Surveying, LLC.	941-485-3100
F.R. Aleman & Associates, Inc.	305-591-8777
F.R.S. & Associates, Inc.	561-478-7178
FLT Geosystems	954-763-5300
Fortin, Leavy, Skiles, Inc.	305-653-4493
FTE Engineers & Planners	800-639-4851

G	
Gary Allen Land Surveying	850-877-0541
Geodata Consultants, Inc.	407-732-6965
Geoline Surveying	386-418-0500
Geomatics Corporation	904-824-3086
Geo Networking, Inc.	407-549-5075
GeoPoint Surveying, Inc.	813-248-8888
George F. Young, Inc.	727-822-4317
GeoSurv, LLC.	877-407-3734
Germaine Surveying, Inc.	863-385-6856
GPI Geospatial, Inc.	407-851-7880
Gustin, Cothorn & Tucker, Inc.	850-678-5141
H	
Hamilton Engineering & Surveying, Inc.	813-250-3535
H.L. Bennett & Associates, Inc.	863-675-8882
Hanson Professional Services, Inc.	217-788-2450
Hanson, Walter & Associates, Inc.	407-847-9433
Hole Montes, Inc.	239-254-2000
Hyatt Survey Services, Inc.	941-748-4693
I	
I.F. Rooks & Associates, LLC.	813-752-2113
J	
John Ibarra & Associates, Inc.	305-262-0400
John Mella & Associates, Inc.	813-232-9441
Johnston's Surveying, Inc.	407-847-2179
Jones, Wood, & Gentry, Inc.	407-898-7780

K	
KCI Technologies, Inc.	954-776-1616
Keith and Associates, Inc.	954-788-3400
Kendrick Land Surveying	863-533-4874
King Engineering Associates, Inc.	813-880-8881
L	
L&S Diversified, LLC.	407-681-3836
Landmark Engineering & Surveying Corporation	813-621-7841
Land Precision Corporation	727-796-2737
Langan Engineering	973-560-4900
Leading Edge Land Services, Inc.	407-351-6730
Leiter Perez & Associates, Inc.	305-652-5133
Lengemann	352-669-2111
Leo Mills & Associates, Inc.	941-722-2460
LidarUSA	256-274-1616
Long Surveying, Inc.	407-330-9717
Ludovici & Orange Consulting Engineers	305-448-1600
M	
MacSurvey, Inc.	727-725-3269
Manuel G. Vera & Associates, Inc.	305-221-6210
Marco Surveying & Mapping, LLC.	239-389-0026
Maser Consulting, P.A.	813-207-1061
Massey-Richards Surveying & Mapping, LLC.	305-853-0066
Masteller, Moler & Taylor, Inc.	772-564-8050
McCain Mills, Inc.	813-752-6478
McKim & Creed, Inc.	919-233-8091
McLaughlin Engineering, Co.	954-763-7611
Metron Surveying and Mapping, LLC.	239-275-8575
Metzger + Willard, Inc.	813-977-6005
Mock Roos & Associates, Inc.	561-683-3113

N	
Navigation Electronics, Inc.	337-237-1413
Northstar Geomatics, Inc.	772-485-1415
Northwest Surveying, Inc.	813-889-9236
NV5, Inc.	407-896-3317
O	
Omni Communications, LLC.	813-852-1888
On The Mark Surveying, LLC.	321-626-6376
P	
PEC Surveying & Mapping, LLC.	407-542-4967
Pennoni Associates, Inc.	215-222-3000
Pickett & Associates, Inc.	863-533-9095
Platinum Surveying & Mapping, LLC.	863-904-4699
Point Break Surveying, LLC.	941-378-4797
Point to Point Land Surveyors, Inc.	678-565-4440
Polaris Associates, Inc.	727-461-6113
Porter Geographical Positioning & Surveying, Inc.	863-853-1496
Pulice Land Surveyors, Inc.	954-572-1777
Q	
Q Grady Minor & Associates, PA	239-947-1144
R	
Rhodes & Rhodes Land Surveying, Inc.	239-405-8166
Richard P. Clarson & Associates, Inc.	904-396-2623
R.M. Barrineau & Associates, Inc.	352-622-3133
R.J. Rhodes Engineering, Inc.	941-924-1600
Reece & White Land Surveying, Inc.	305-872-1348
Robayna and Associates, Inc.	305-823-9316

S	
SAM Surveying & Mapping, LLC.	850-385-1179
Sergio Redondo & Associates, Inc.	305-378-4443
Settimio Consulting Services	850-341-0507
SGC Engineering, LLC.	207-347-8100
Shah Drotos & Associates, PA	954-943-9433
Shannon Surveying, Inc.	407-774-8372
Sherco, Inc.	863-453-4113
Sliger & Associates	386-761-5385
S&ME, Inc.	407-975-1273
Southeastern Surveying & Mapping Corp.	407-292-8580
Stephen H. Gibbs Land Surveyors, Inc.	954-923-7666
Stoner & Associates, Inc.	954-585-0997
Strayer Surveying & Mapping, Inc.	941-497-1290
Suarez Surveying & Mapping, Inc.	305-596-1799
Surv-Kap	520-622-6011
SurvTech Solutions, Inc.	813-621-4929
T	
T2UES, Inc.	855-222-8283
Thurman Roddenberry & Associates, Inc.	850-962-2538
Tuck Mapping Solutions, Inc.	276-523-4669

U	
Upham, Inc.	386-672-9515
W	
Wade Surveying, Inc.	352-753-6511
Wallace Surveying Corp.	561-640-4551
Wantman Group, Inc.	561-687-2220
WBQ Design & Engineering, Inc.	407-839-4300
Winningham & Fradley, Inc.	954-771-7440
Woolpert, Inc.	937-461-5660
Z	
ZNS Engineering, LLC.	941-748-8080



David L. Hurley

November 5, 1944 - July 26, 2020

David L. Hurley, 75, of Anderson, passed away on July 26, 2020 at the Prairie Lakes Health Campus. He was born on November 5, 1944 in New Castle, Indiana..

David graduated from Middletown High School and from University of Maryland (Extension). He served his country in the US Army.

He and his partner, Everett Morrow developed Landmark Engineering and Surveying Corporation in Tampa, FLorida where he was very active in the Tampa Bay community.

David is survived by his loving spouse, wife, Jane Hurley: children, Lezlee Jo Pardo, Aaron Hurley, Julie Rossi, siblings, Mattie Ballenger, Bill Ballenger, 8 grandchildren, and one great-grandson, former spouse and mother of his children, Sandra Click.

He was preceded in death by 2nd wife, Beverley Hurley, adoptive father, Marvin "Pete" Hurley, adoptive mother, Sylvia Hurley, birth father, Leo Ballenger, birth mother, Lucy Ballenger, siblings, Edgar Ballenger, Paul Ballenger, Ruby Ballenger.

Visitation will be held on July 31, 2020 from 12:30pm - 2:30pm at Loose Funeral Homes & Crematory, 200 West 53rd Street, Anderson, IN followed by the service at 2:30pm officiated by Pastor Tom Wiles.

Memorial contributions may be made to National Parkinson's Association.

www.loosecares.com.



Florida Surveying and
Mapping Society

2020 eLearning Courses



Basics of Real Property
Course #8360 (3 General
CEC)

\$ 70⁰⁰



Boundaries in Florida
Course #8255 (6
SOP/L&R CEC)

\$ 120⁰⁰



Contracts for the
Professional Course
#8412 (3 General CEC)

\$ 70⁰⁰



Elevation Certificates and
the Community Rating
System Course #8256 (3
General CEC)

\$ 70⁰⁰



Ethics for the Design
Professional Course
#8621 (6 General CEC)

\$ 120⁰⁰



Florida Laws Course
#7149 (6 SOP/L&R CEC)

\$ 120⁰⁰



Professional Ethics and
Professional Courtesy
FULL Video Course
#8363 (6 General CEC)

\$ 120⁰⁰



Georgia Technical
Standards for Property
Surveys Course #8554 (6
General CEC)

\$ 120⁰⁰



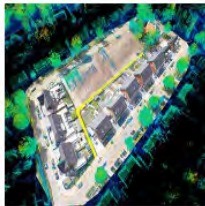
History of Surveying
Course #7140 (6 General
CEC)

\$ 120⁰⁰



Identification of Native
and Non-Native Trees in
Florida Course #8132 (6
General CEC)

\$ 120⁰⁰



Introduction to
Photogrammetry Course
#7968 (3 General CEC)

\$ 70⁰⁰



Land Tenure and
Cadastral Systems
Course #8260 (6 General
CEC)

\$ 120⁰⁰



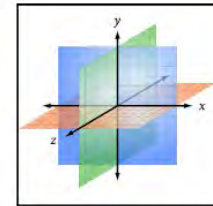
Map Projections and
Plane Coordinate
Systems Course #8261 (6
General CEC)

\$ 120⁰⁰



Mean High Water
Observations &
Computations Course
#8262 (6 General CEC)

\$ 120⁰⁰



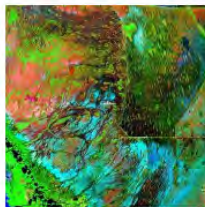
Practical Geometry for
Surveyors Course #7141
(6 General CEC)

\$ 120⁰⁰



Public Land Survey
System Course #7147 (6
General CEC)

\$ 120⁰⁰



Remote Sensing
Applications to Surveying
& Mapping Course #7148
(6 General CEC)

\$ 120⁰⁰



Writing Boundary
Descriptions Course
#8362 (3 General CEC)

\$ 70⁰⁰



Correspondence Courses



Step 1: Choose Course(s)

- ☐ **5J-17 Standards of Practice (SOP), #6962, 6 SOP/L&R CEC**
- ☐ **A History of the Prime Meridian Marker, #8403, 3 General CEC**
- ☐ **Basics of Real Property, #8359, 3 General CEC**
- ☐ **Boundaries in Florida, #7667, 6 SOP/L&R CEC**
- ☐ **Chapter 177, Platting (Plat Law), #6970, 6 SOP/L&R CEC**
- ☐ **Client Satisfaction Excellence for Surveying and Mapping Professionals, #7229, 6 General CEC (Only available by mail)**
- ☐ **Contracts for the Professional, #8411, 3 General CEC**
- ☐ **Critical Communication for Surveying & Mapping Professionals, #7228, 6 General CEC (Only available by mail)**
- ☐ **Digital Signatures for Surveyors, #8491, 3 General CEC**
- ☐ **Elevation Certificates and the Community Rating System, #8257, 3 General CEC**
- ☐ **Ethics for the Design Professional, #8620, 6 General CEC**
- ☐ **Florida Laws, #6966, 6 SOP/L&R CEC**
- ☐ **Georgia Technical Standards for Property Surveys, #8553, 6 General CEC**
- ☐ **Geographic Information Systems (GIS), #7107, 6 General CEC**
- ☐ **History of Surveying, #7108, 6 General CEC**
- ☐ **Identification of Native and Non-Native Trees in Florida, #7874, 6 General CEC**
- ☐ **Introduction to Photogrammetry, #7887, 3 General CEC**
- ☐ **Land Tenure and Cadastral Systems, #7829, 6 General CEC**
- ☐ **Map Projections and Plane Coordinate Systems, #7669, 6 General CEC**
- ☐ **Mean High Water Observations and Computations, #8220, 6 General CEC**
- ☐ **Practical Geometry for Surveyors, #7109, 6 General CEC**
- ☐ **Public Land Survey System, #6979, 6 General CEC**
- ☐ **Remote Sensing Applications to Surveying & Mapping, #6972, 6 General CEC**
- ☐ **Stress Management for Surveyors & Mappers: How to be Productive Under Pressure, #6902, 6 General CEC (Only available by mail)**
- ☐ **Time Management for Surveyors & Mappers: How to be Productive & Exercise Time Mastery in A Hectic World, #6901, 6 General CEC (Only available by mail)**
- ☐ **Writing Boundary Descriptions, #8361, 3 General CEC**

Step 2: Choose Member Type

☐ **FSMS Member**

EMAILED	Fee	Quantity	Amount
6 CEC	\$115 Per Course	x _____	= \$ _____
3 CEC	\$58 Per Course	x _____	= \$ _____
MAILED			
6 CEC	\$125 Per Course	x _____	= \$ _____
3 CEC	\$68 Per Course	x _____	= \$ _____
TOTAL			\$ _____

☐ **Non-Member**

EMAILED	Fee	Quantity	Amount
6 CEC	\$135 Per Course	x _____	= \$ _____
3 CEC	\$78 Per Course	x _____	= \$ _____
MAILED			
6 CEC	\$145 Per Course	x _____	= \$ _____
3 CEC	\$88 Per Course	x _____	= \$ _____
TOTAL			\$ _____

☐ **Non-Licensed in ANY State**

EMAILED	Fee	Quantity	Amount
6 CEC	\$100 Per Course	x _____	= \$ _____
3 CEC	\$60 Per Course	x _____	= \$ _____
MAILED			
6 CEC	\$110 Per Course	x _____	= \$ _____
3 CEC	\$70 Per Course	x _____	= \$ _____
TOTAL			\$ _____

Step 3: Payment Information

Name: _____ PSM#: _____ State: _____ FSMS Member: ____ YES ____ NO

Firm: _____ Sustaining Firm: ____ YES ____ NO

Address: _____

City/State: _____ Zip Code: _____

Email Address: _____ Work Phone: _____

Payment Information: _____ Check Enclosed (Payable to FSMS) _____ VISA/MasterCard/American Express

Card #: _____ Exp. Date: _____ CVV Code: _____

Billing Address of Credit Card: _____

Signature: _____

IF PAYING BY CHECK, MAIL FORM TO: FSMS, P.O. Box 850001-243, Orlando, Florida 32885-0243

IF PAYING BY CREDIT CARD, FAX OR EMAIL FORM TO: 850.877.4852 education@fsms.org

QUESTIONS? CALL 800.237.4384

Provider No. CE11

No refund of purchase. Voucher will be issued.

fsms.org

STOP THE SPREAD OF GERMS

Help prevent the spread of respiratory diseases like COVID-19.

**Avoid touching your
eyes, nose, and mouth.**



cdc.gov/COVID19

CS316038A March 17, 2020 2:06 PM

STOP THE SPREAD OF GERMS

Help prevent the spread of respiratory diseases like COVID-19.

**Wash your hands often
with soap and water for
at least 20 seconds.**



cdc.gov/COVID19

CS316038A March 17, 2020 2:06 PM

STOP THE SPREAD OF GERMS

Help prevent the spread of respiratory diseases like COVID-19.

**Clean and disinfect
frequently touched
objects and surfaces.**



cdc.gov/COVID19

CS316038A

DETENGA LA PROPAGACIÓN DE LOS MICROBIOS

Ayude a prevenir la propagación de enfermedades respiratorias como el COVID-19.

**Evite tocarse los ojos,
la nariz y la boca.**



cdc.gov/COVID19-es

CS316038A 19 de marzo, 2020 4:22 p. m.

DETENGA LA PROPAGACIÓN DE LOS MICROBIOS

Ayude a prevenir la propagación de enfermedades respiratorias como el COVID-19.

**Lávese frecuentemente
las manos con agua y jabón
por al menos 20 segundos.**



cdc.gov/COVID19-es

CS316038A 19 de marzo, 2020 4:22 p. m.

DETENGA LA PROPAGACIÓN DE LOS MICROBIOS

Ayude a prevenir la propagación de enfermedades respiratorias como el COVID-19.

**Limpie y desinfecte los
objetos y las superficies que
se tocan frecuentemente.**



cdc.gov/COVID19-es

CS316038A 19 de marzo, 2020 4:22 p. m.

2020 Chapter Presidents

District 1

Panhandle

Mike Blanton
Michael.Blanton@nee.com

Gulf Coast

Frederic Rankin
erankin@dewberry.com

Chipola

Jesse Snelgrove
jsnelgrove@
snelgrovesurveying.com

Northwest FL

Jeremy Fletcher
fletcher.jwf@gmail.com

District 2

FL Crown

Kathy Wade
kathy@boatwrightland.com

N. Central FL

Brian Murphy
bmurphy@3002inc.com

UF Geomatics

Scott Edenfield
sedenfield@ufl.edu

District 3

Central FL

Leon Hampton
lham5910@yahoo.com

Indian River

Brion Yancy
brionyancy@gmail.com

Volusia

Anthony Sanzone
eastcoastland@
bellsouth.net

District 4

Ridge

Larry Sharp
lsharp@collinssurvey.com

Tampa Bay

Charlie Arnett
CArnett@
Geopointsurveying.com

District 5

Charlotte Harbor

Derek Miller
millersurveying@
comcast.net

Collier-Lee

Steve Shawles II
sshawles@cesincusa.com

Manasota

Donald A. Bouchard, Jr.
donb@znseng.com

District 6

Broward

Earl Soeder
earl@gpserv.com

Palm Beach

Clyde Mason
clyde@ritzel-mason.com

FAU Geomatics

Gerardo Rojas
grojas2017@fau.edu

District 7

Miami-Dade

Frank Pauas-Suiero
fparuas@gpinet.com

2020 Districts & Directors

District 1 -/Northwest

Bay, Calhoun, Escambia, Franklin, Gadsden, Madison, Okaloosa, Santa Rosa, Taylor, Wakulla, Walton, Washington

Eric Stuart
(850)857-7725
eric.stuart@sam.biz

Chad Thurner
(850) 200-2441
chad.thurner@sam.biz

District 2 / Northeast

Alachua, Baker, Bradford, Clay, Columbia, Dixie, Duval, Gilchrist, Hamilton, Lafayette, Levy, Marion, Nassau, Putnam, Suwannee, St. Johns, Union

Nick Digruttolo
(863) 344-2330
ndigruttolo@pickettusa.com

Randy Tompkins
(904) 755-4235
randytompkins1@outlook.com

District 3/East Central

Brevard, Flagler, Indian River, Lake, Okeechobee, Orange, Osceola, Seminole, Martin, St. Lucie, Volusia

Al Quickel
(407) 567-1566
alq.fsms@gmail.com

Howard Ehmke
(561) 682-2987
ehmke@sfwmd.gov

District 4/ West Central

Citrus, Hernando, Hillsborough, Pasco, Pinellas, Polk, Sumter

Greg Prather
(863) 533-9095
gprather@pickettusa.com

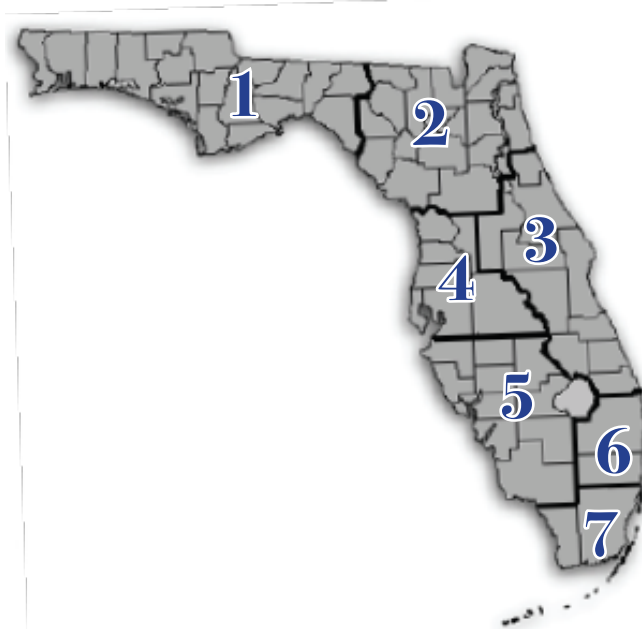
Alex Parnes
(727) 847-2411
alexwolfeparnes@gmail.com

District 5/ Southwest

Collier, Charlotte, DeSoto, Glades, Hardee, Hendry, Highlands, Lee, Manatee, Sarasota

Shane Christy
(941) 748-4693
shane@hyattsurvey.com

Jeffrey Cooner
(239) 829-7016
jeff.cooner@cardno.com



District 6/Southeast

Broward, Palm Beach

Ken Buchanan
(561) 687-2220
ken.buchanan@wginc.com

Dodie Keith-Lazowick
(954) 788-3400
dkeith@keithteam.com

District 7/South

Miami-Dade, Monroe

Manny Vera, Jr.
(305) 221-6210
mverajr@mgvera.com

Lou Campanile
(954) 980-8888
lou@campanile.net

NSPS Director

Russell Hyatt
(941) 748-4693
russell@hyattsurvey.com

Additional Information

Past Presidents

1956

H.O. Peters
Harry C. Schwebke
John P. Goggin
R.H. Jones

1960

Hugh A. Binyon
Russell H. DeGrove
Perry C. McGriff
Carl E. Johnson

James A. Thigpenn, III
Harold A. Schuler, Jr.
Shields E. Clark
Maurice E. Berry II
William C.. Hart
Frank R. Schilling, Jr.

1970

William V. Keith
James M. King
Broward P. Davis
E.R. (Ed) Brownell
E.W. (Gene) Stoner
Lewis H. Kent
Robert S. Harris
Paul T. O'Hargan
William G. Wallace, Jr.
Robert W. Wigglesworth

1980

Ben P. Blackburn
William B. Thompson, II
John R. Gargis
Robert A. Bannerman
H. Bruce Durden
Buell H. Harper
Jan L. Skipper
Steven M. Woods
Stephen G. Vrabel
W. Lamar Evers

1990

Joseph S. Boggs
Robert L. Graham
Nicholas D. Miller
Loren E. Mercer
Kent Green
Robert D. Cross
Thomas L. Conner
Gordon R. Niles, Jr.
Dennis E. Blankenship
W. Lanier Mathews, II
Jack Breed

2000

Arthur A. Mastronicola
Michael H. Maxwell
John M. Clyatt
David W. Schryver
Stephen M. Gordon
Richard G. Powell
Michael J. Whiting
Robert W. Jackson, Jr.
Pablo Ferrari
Steve Stinson

2010

Dan Ferrans
Jeremiah Slaymaker
Ken Glass
Russell Hyatt
Bill Rowe
Dale Bradshaw
Lou Campanile, Jr.
Bob Strayer, Jr.
Dianne Collins

Upcoming Events

*Please email
communications@fsms.org to
notify us of upcoming events -
including virtual meetings!*

Advertise With Us!

All advertisements contained within the publication are published as a service to readers. Publication of the advertisements does not imply or express any endorsement or recommendation by FSMS. The rates are as follows.

Requirements: Contracts for one year (11 issues) receive 10% discount if paid in advance; camera-ready copy (JPEG, PDF, GIF, PNG docs); new ads and/or changes are due by the 15th of each month. It is the responsibility of the client to submit new ads or changes.

Benefits: Full color; hot links to your websites added to your ad.

Size	1 Issue	2-11 Issues
Inside Front Cover	n/a	\$525/issue
Inside Back Cover	n/a	\$525/issue
Full Page	\$720	\$395/issue
1/2 Page	\$575	\$320/issue
1/4 Page	\$290	\$175/issue
Business Card	\$120	\$100/issue

SURV-KAP®

No Boundaries On Customer Service



MONUMENTS, MARKERS, CAPS & ACCESSORIES

ORDER NOW: 800-445-5320 • SURV-KAP.COM

eGPS
SOLUTIONS



Stan Wilson | FL Sales & Support Rep | swilson@egps.net
c: 770.715.3891 | o: 770.695.3361 | www.egps.net

YOUR **ONE-STOP** SHOP FOR **ALL** SURVEYING NEEDS!

RTK Network | Equipment, Supplies, Accessories | Tech Support
Certified Repairs | Rentals | Data Plans | UAV, LiDAR Sales & Training



Authorized Reseller of
LiDARUSA
Fagerman Technologies Inc.



Authorized Reseller of
GEOMAX

Gold Status GeoMax-Authorized
Total Station, Robotics and GPS Service Center.

Leica Aibot

UAV Surveying You Can Trust



This complete UAV solution for surveying and mapping enables fast and flexible data collection from above. An easy workflow integrated into the Leica Geosystems' ecosystem guides you through your project lifecycle, providing quick access to critical information needed to complete your day-to-day surveying, inspection and GIS tasks.

Visit uav.leica-geosystems.com for more information. Contact John McKay jmckay@floridalevel.com or 954-818-4631 to request a demo.

Leica
Geosystems



www.FLTgeosystems.com



FT. LAUDERDALE

800 PROGRESSO DR., FT. LAUDERDALE, FL 33304 (954)763-5300 • FAX: (954)462-4121

1-800-327-0775

TAMPA

5468 56TH COMMERCE PARK BLVD., TAMPA, FL 33610 (813)623-3307 • FAX: (813)623-2100

WE'RE AN EQUAL OPPORTUNITY EMPLOYER

1-800-282-7003

SUMMER SPECIAL

GET AN ADDITIONAL

10% OFF*

ALL STOREWIDE PURCHASES!

FOR FSMS READERS

PROMO CODE: SUMMER10

*Enter code at checkout. Applies to storewide online purchases: supplies, accessories, and instruments. Expires 8/31/2020.