



THE FLORIDA SURVEYOR

Aug/Sept 2021
Volume XXIX, Issue 8

IN THIS ISSUE:

Conference Recap

Lots of Conference Photos!



Call us to get your complete workflow solution today!

Efficiency and versatility that will accelerate productivity comes part of a workflow solution that includes the FC-6000 field controller, Magnet software, a HiPer VR receiver and the GT-1200/GT-600 single-operator robotic system. The power of long-range reflectorless measurements comes in your choice of 1", 2" or 3" GT-1200 models or 2", 3" or 5" GT-600 models.



Lengemann Corporation

43316 State Road 19
Altoona, FL 32702

800.342.9238

www.lengemann.us

Products for
Professionals





SeaRobotics
SR-Surveyor M1.8

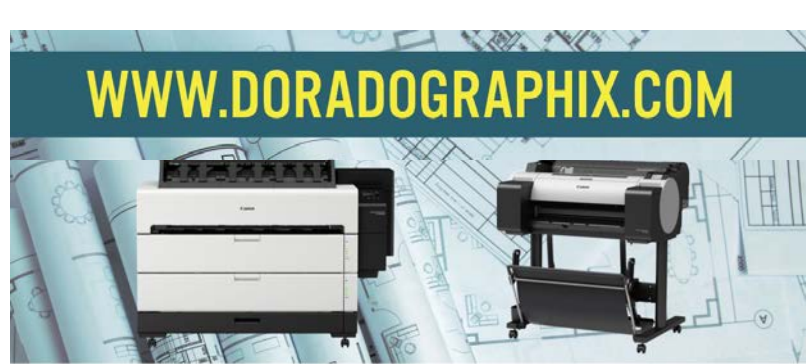
Sea the Difference

From Coastal
to Deep Sea

For over fifty years, CSA Ocean Sciences has partnered with leading commercial, academic, and government organizations around the globe to design and implement best-in-class marine environmental programs and mitigation strategies.

Find out how we can help manage your future environmental footprint, today.

csaocean.com



WWW.DORADOGRAPHIX.COM

Whether you need a higher production printer, like the **Canon TZ-30000** for larger volume printing, or a lower volume printer for a small or individual office, like the 24" **TM-200** or 36" **TM-305** - Dorado Graphix has your solution!

CALL TODAY FOR A FREE CONSULTATION

*Dorado
Graphix LLC*



Wide Format Equipment & Supplies
Training • Service • Sales

904-751-4500

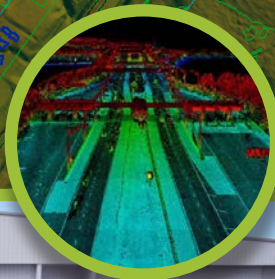
10592 BALMORAL CIR. E. #9

CONTACT@DORADOGRAPHIX.COM

JACKSONVILLE, FL 32218

GPI

Geospatial & Survey Solutions



GPI



GPI Geospatial, Inc.

3051 E. Livingston St., Suite 300 | Orlando, FL 32803

407.851.7880 | www.gpinet.com/geospatial

TOPCON

Make the most of these launches. Use quality GPS products from Topcon.



GeoNetworking
SALES | SERVICE | RENTAL



DISCOVER THE DRMP DIFFERENCE

Explore Our Expertise
www.DRMP.com

As an A/E/C industry leader, our philosophy since 1977 is to foster a working environment focused on collaboration and to continually invest in our best asset: our employees. This approach has given us a reputation of offering excellence in every project we deliver - positively impacting the communities we serve.

 *Join Our Team!*

 **DRMP**

TABLE OF CONTENTS

PRESIDENT'S
message **2**

FSMS
2021 CONFERENCE
Photos **7**

EDUCATION
COURSE
information **29**

COMMITTEES
35

ADMIN
staff **37**

SUSTAINING
firms **39**

CHAPTER
presidents **45**

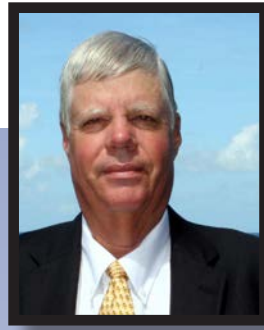
DISTRICTS &
directors **46**

ADDITIONAL
information **47**



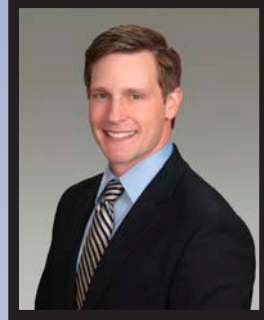
2021 FSMS

officers



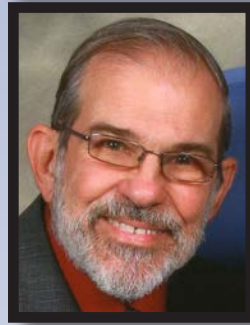
President-Elect

Lou Campanile
(352) 547-3086
lou@campanile.net



Vice President

Jim Sullivan
(561) 687-2220
Jim.Sullivan@wginc.com



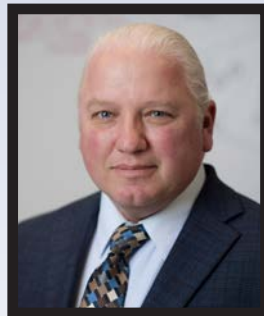
Secretary

Joe Perez
(321) 230-4420
jlperez@pesengsurv.com



Treasurer

Bon Dewitt
(352) 392-6010
bon@ufl.edu



Immediate Past President

Don Elder
(850) 354-9665
donelderpsm@gmail.com

PRESIDENT'S message

Thanks for all of you that attended YOUR 2021 Annual Conference!!!!

If you were there, I hope you had a good time! If you weren't there, you missed a great conference.

I really enjoyed seeing old friends in person, and meeting many new. The last year and a half has been difficult on all of us, and COVID has taken its toll on our society. Even though we haven't been meeting in person, it felt like "old times", and was very rewarding to me.

We had many great classes, and I was most impressed with Dr. Stacey Lyle's, NCEES test prep class – we had over 50 attendees, all of whom will be sitting for their PSM tests in the near future!! Great to see the future of our profession at our conference!

Our most important issue over the last year have been legislative attacks on our profession. We are lucky to have David Daniel as our lobbyist. He has been very active this year in supporting our interests with legislators, and we had a successful legislative session.

The FSMPAC (Florida Surveying & Mapping Political Action Committee) is vital to support our professional interests with legislators, so PLEASE considering donating to our FSMPAC!

On a personal level, I am very honored to be your President for 2021, and was honored to receive the HO Peters Surveyor of the Year award. As some of you know, my grandfather and namesake, was the founding president of FSMS in 1955. I grew up next door to him, and still live on his farm in Weirsdale, Florida. All my life I have heard stories of surveying "in the old day", and even attended a couple of FSPLS conferences in the mid 1980s, when I was in high school. For me, life has come full circle, and the Survey profession has been very good to me. It is truly an honor to walk in "HO Peters footsteps", and to serve our Profession.

Thanks for the GREAT conference!!!



President

Hal Peters

(352) 304-9534

hpeters@gpinet.com

Life is motion.

Reach your goals with HUB.

When you partner with us, you're at the center of a vast network of experts dedicated to helping you prepare for the unexpected.

We'll advise you on how to confidently manage in an ever-changing business landscape, and tailor solutions to help you protect your organization, brand and assets.

hubinternational.com

Russ Browning, Commercial Risk Manager
HUB International Florida
(850) 545-5219
Russ.Browning@hubinternational.com



Risk & Insurance | Employee Benefits | Retirement & Private Wealth



Map & Survey with Ease & Accuracy



Erin McCormick
Florida Mapping & GIS Sales
Erin_McCormick@neigps.com
850-228-2070

CALL US TOLL FREE
800.949.1446
VISIT OUR SITE
neigps.com

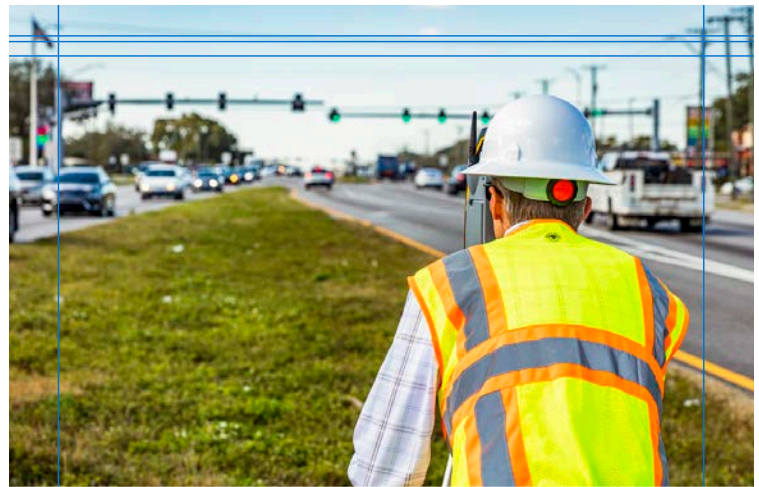
Robert Martin
Florida Survey Sales
Robert_Martin@neigps.com
501-681-7779

Equipment Sales | Accessories | Field Supplies | Rentals | Service Support
Training | Used Equipment | Custom Cases & Cables | Software Solutions



MAXIMIZING THE VALUE OF YOUR POINT CLOUD PROJECT DATA!

Contact your Florida neighbor and industry leader!
www.topodot.com - info@topodot.com - (407) 248 0160



Land Survey, Aerial Mapping, and GIS

Nationally recognized for our skill and experience in land surveying, aerial mapping, and GIS, Ayres delivers efficient and intelligent solutions for your projects.

Cape Coral | Tampa | Titusville
813.978.8688



www.AyresAssociates.com

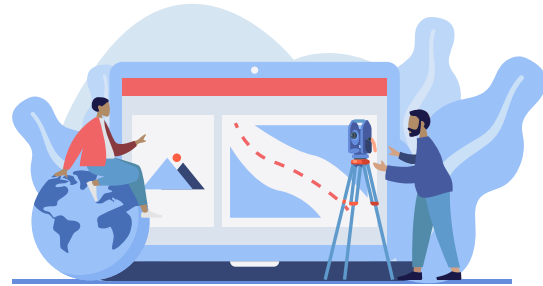


CIVIL AND SURVEYING

Engineering solution, meticulously crafted

Precision & accuracy underline our CAD drafting services, ably backed by an expert team that extensively understands design, architecture & land surveying.

- Topos
- Tower
- ALTA
- Lot & block
- boundaries,
- Point cloud processing
- Utilities
- Orthomosaic to 2D CAD
- Metes & bounds
- Commercial Surveys



BIM | ARCHITECTURAL | GIS

When it comes to innovation, don't lose the plot !

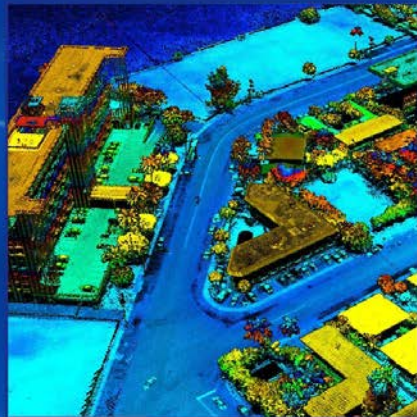
Find the details you need from a dense universe of more than a million points, stored, curated and processed by highly powerful systems and smart analysts.

- 3D scan to BIM Model
- Contours / Terrain / DEM / DSM
- Surface and slope
- Surface / Slope / Height / Width Calculations
- Volume Calculations
- Mapbox Interactions / Python scripting
- Point Cloud classification/ Segmentation
- ESRI / QGIS Mapping
- Point Cloud filtering

www.g sourcedata.com

Success can be Measured

Land & Hydrographic Surveys
Aerial LiDAR Mapping & Imagery
UAS & USV Mapping
Transmission Engineering



PICKETT
SURVEYING • ENGINEERING



YOUR ONE-STOP SHOP FOR ALL SURVEYING NEEDS!

RTK Network | Equipment, Supplies, Accessories | Tech Support
Certified Repairs | Rentals | M2M Data Plans | UAV, LiDAR Sales & Training



Authorized Reseller of
LiDARUSA
Figge Technology Inc.

Authorized Reseller of
GEOMAX

Gold Status GeoMax-Authorized
Total Station, Robotics and GPS Service Center.



"Delivery you can depend on"

Regularly scheduled delivery routes serving Central and West Florida.

State and Nationwide shipping available



www.STAKEMILL.COM (727) 538-0886

IMPORTANT!!!



CLICK HERE TO DONATE TO FSM PAC!



**Duncan
Parnell**
Successful Projects Start Here

YOUR TRUSTED FIELD-TO-FINISH SOLUTIONS PROVIDER

Offering the latest in Trimble instruments, software, accessories, supplies, rentals, training and maintenance

 **Trimble**
Authorized Distribution Partner

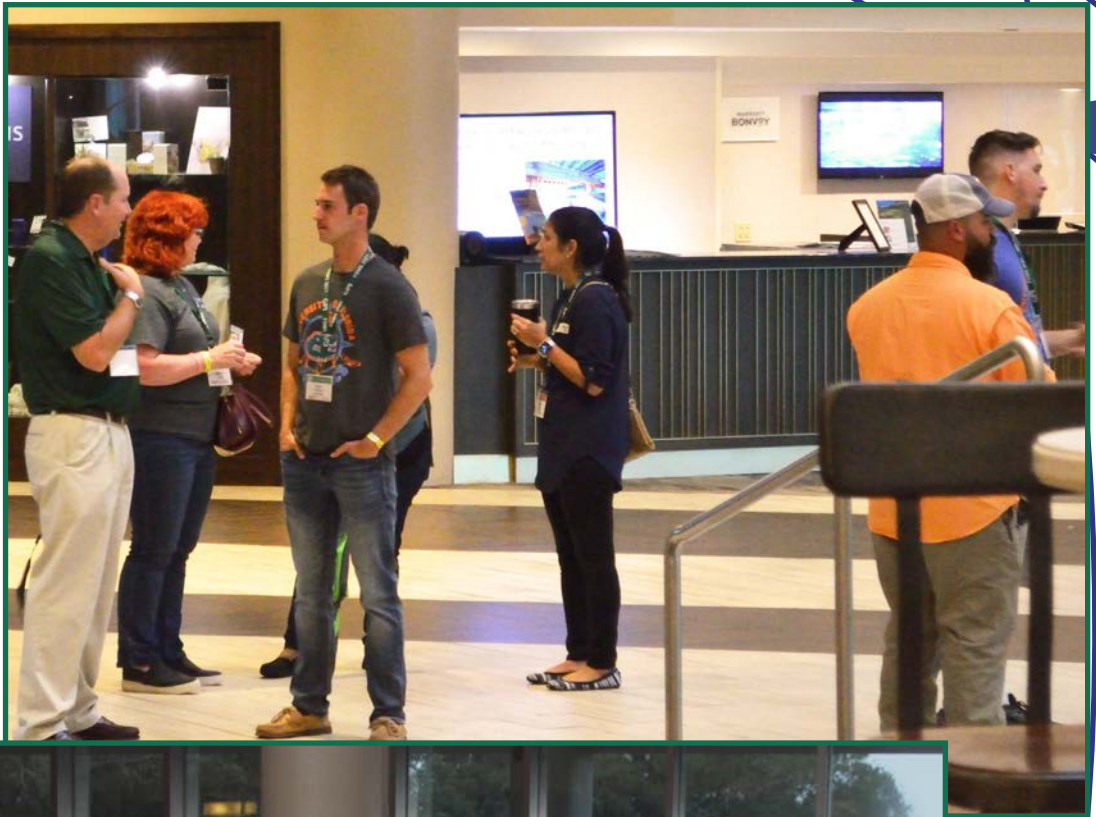
Over
20
YRS.

621 Brookhaven Dr, Orlando, FL 32803 | (407) 601-5816 | duncan-parnell.com

CONFERENCE

JULY 28 - 31, 2021





BBO *Dinner*





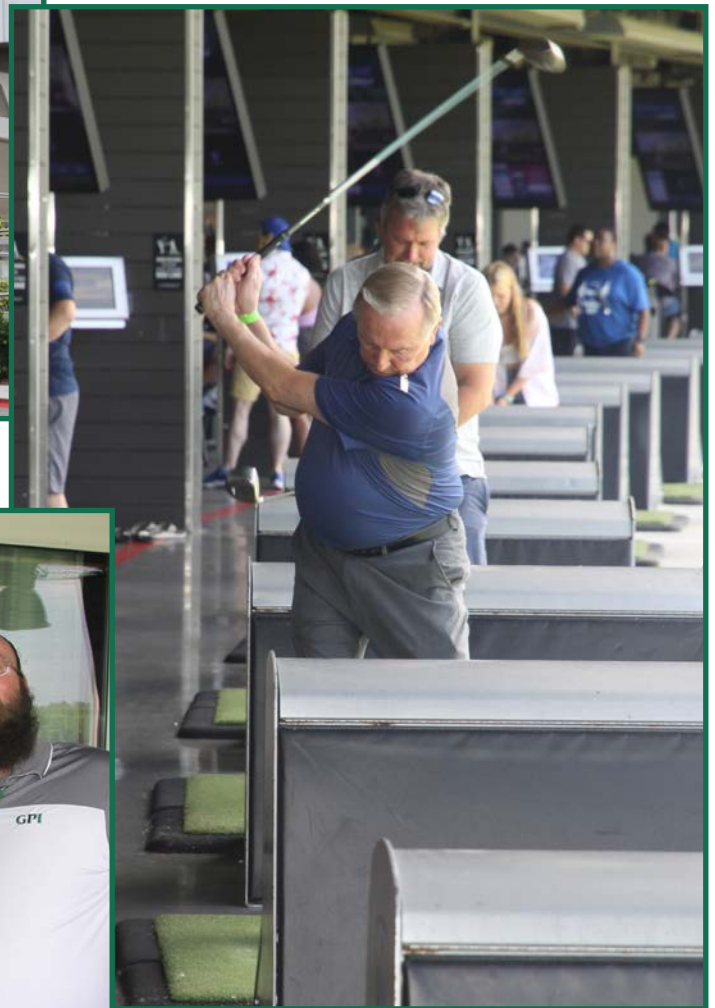
CORNHOLE *Tournament*





2021
CHAMPS!!
EDDIE MUNOZ ALEX JENKINS III
CORNHOLIOS!

TOPGOLF Tournament





GAME Night





PRESIDENT'S Reception



EXHIBITOR'S *Reception*

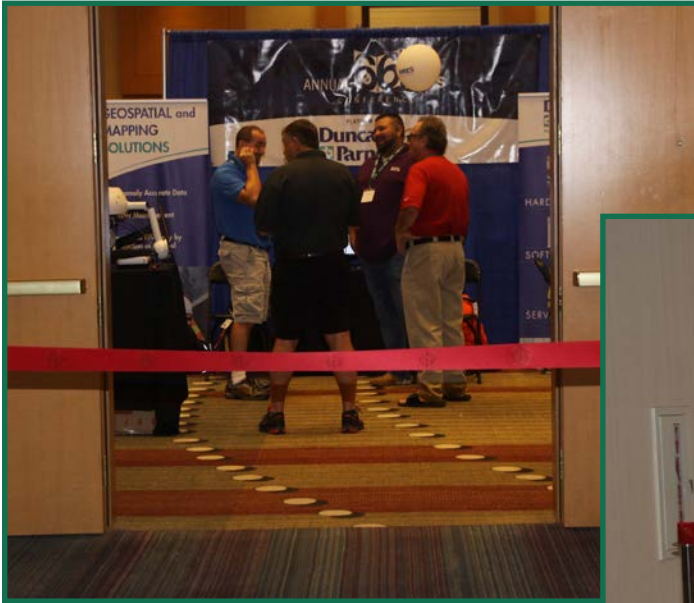
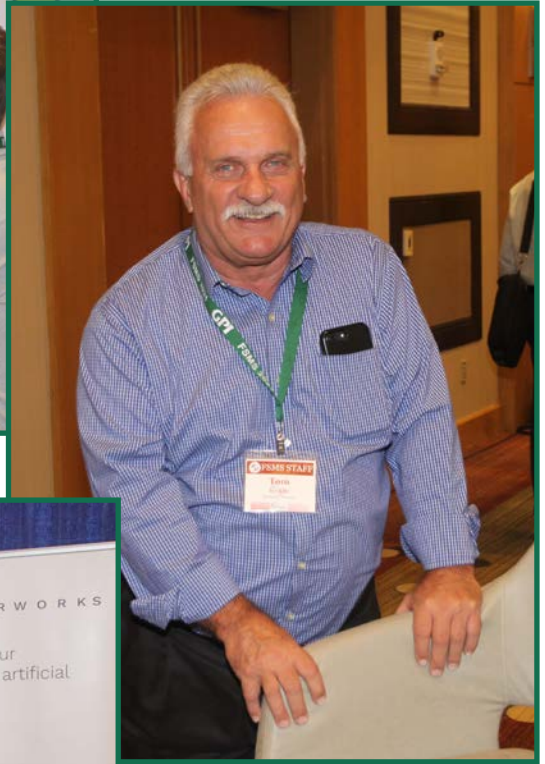


EXHIBIT Hall









RECOGNITION Banquet











**Steven Woods Exceptional
Service Award**

Donald (Don) Elder



**H.O. Peters Surveyor
and Mapper of the Year**

Harold (Hal) Peters



**Jim Bennett Board
Member of the Year**

Greg Prather



Fellow Member Award

Howard Ehmke



Committee Chair of the Year

John (Jack) Breed



**Young Professional Surveyor
and Mapper of the Year**

Adam Benjamin



Professional Excellence Award

**Ronald (Ron) Hanson & Scott Harper
(not pictured)**



Chapter President of the Year

Earl Soeder



Large Chapter of the Year

Broward Chapter

FSMS Correspondence Courses

*Florida Surveying and Mapping Continuing Education Provider
Offering 25 Years of Dedication, Quality & Trusted Services*

Step 1: Choose Course(s)

3 Hour Courses Available

- **A History of the Prime Meridian Marker, #8403, 3 CEC**
- **Basics of Real Property, #8359, 3 CEC**
- **Digital Signatures for Surveyors, #8491, 3 CEC**
- **Easements and Rights of Ways, #9945, 3 CEC *2020 UPDATED COURSE**
- **Elevation Certificates and the Community Rating System, #8257, 3 CEC *2020 UPDATED COURSE**
- **Introduction to Photogrammetry, #7887, 3 CEC**
- **Quality Assurance/Quality Control for the Design Professional and Technical Staff, #9293, 3 CEC**
- **Writing Boundary Descriptions, #8361, 3 CEC *2020 UPDATED COURSE**

6 Hour Courses Available

- **Boundaries in Florida, #7667, 6 CEC**
- **Chapter 177, Platting (Plat Law), #6970, 6 CEC**
- **Critical Communication for Surveying & Mapping Professionals, #7228, 6 CEC**
- **Ethics for the Design Professional, #8620, 6 CEC**
- **Florida Laws, #6966, 6 CEC**
- **Florida Surveying Law and Rule Changes, #9574, 6 CEC**
- **Geographic Information Systems (GIS), #7107, 6 CEC**
- **History of Surveying, #7108, 6 CEC**
- **Identification of Native and Non-Native Trees in Florida, #7874, 6 CEC *2020 UPDATED COURSE**
- **Land Tenure and Cadastral Systems, #7829, 6 CEC**
- **Map Projections and Plane Coordinate Systems, #7669, 6 CEC**
- **Practical Geometry for Surveyors, #7109, 6 CEC**
- **Public Land Survey System, #6979, 6 CEC**
- **Remote Sensing Applications to Surveying & Mapping, #6972, 6 CEC**

FSMS Correspondence Courses

FSMS Member

Step 2: Choose Member Type

<i>EMAILED</i>	Fee	Quantity	Amount
6 CEC	\$115 Per Course	x _____ = \$ _____	
3 CEC	\$58 Per Course	x _____ = \$ _____	
MAILED			
6 CEC	\$125 Per Course	x _____ = \$ _____	
3 CEC	\$68 Per Course	x _____ = \$ _____	
TOTAL			\$ _____

Non-Member

<i>EMAILED</i>	Fee	Quantity	Amount
6 CEC	\$135 Per Course	x _____ = \$ _____	
3 CEC	\$78 Per Course	x _____ = \$ _____	
MAILED			
6 CEC	\$145 Per Course	x _____ = \$ _____	
3 CEC	\$88 Per Course	x _____ = \$ _____	
TOTAL			\$ _____

Non-Licensed in ANY State

<i>EMAILED</i>	Fee	Quantity	Amount
6 CEC	\$100 Per Course	x _____ = \$ _____	
3 CEC	\$60 Per Course	x _____ = \$ _____	
MAILED			
6 CEC	\$110 Per Course	x _____ = \$ _____	
3 CEC	\$70 Per Course	x _____ = \$ _____	
TOTAL			\$ _____

Step 3: Payment Information

Name: _____ PSM#: _____ State: _____ FSMS Member: ___ YES ___ NO

Firm: _____ Sustaining Firm: ___ YES ___ NO

Address: _____

City/State: _____ Zip Code: _____

Email Address: _____ Work Phone: _____

Payment Information: _____ Check Enclosed (Payable to FSMS) _____ VISA/MasterCard/American Express
 Card #: _____ Exp. Date: _____ CVV Code: _____

Billing Address of Credit Card: _____

Signature: _____

IF PAYING BY CHECK, MAIL FORM TO: FSMS, P.O. Box 850001-243, Orlando, Florida 32885-0243
 IF PAYING BY CREDIT CARD, FAX OR EMAIL FORM TO: 850.877.4852 education@fsms.org
 QUESTIONS? CALL 800.237.4384

MEMBERSHIP BENEFITS



BRAND AWARENESS

For unique and creative branded products! Send your logo and receive a free sample!



Contact: Burke Buchanan
(850) 510-0273
www.BurkeBuchanan.com

BACKGROUND CHECKS

Researcher's Associates has been in business for 40 years, providing background checks for employers, insurance companies & attorneys. We will be happy to tailor our services to meet your needs.

Mary Gay
(850) 893-2548



5,000 W. Tallahassee, Florida 32303

COPIER SERVICES

Call Scott Tharpe at Advanced Business Systems for member discounts on all office automation & IT needs, including all Canon, Toshiba, Savin, HP, & Kyocera.



We can ship anywhere in the U.S.

(850) 222-2308
www.a-b-s.com

RENTAL CAR DISCOUNTS

Enjoy great savings every time you rent from Alamo Rent A Car, Enterprise & National.



Wendy Silva
(407) 447-7999

Contact FSMS office for the link to discount.

PAYROLL SERVICES

For all your payroll needs, call Phillip Browning.



(850) 224-2439
www.NorthFloridaPayroll.com

TECH STRATEGY

Trulight is an advisor for tech strategy. We show organizations how to highlight areas of opportunity, while minimizing areas of risk. Key to minimizing risk, is a well defined and implemented cyber security strategy and plan.

Jonathan Kilpatrick
Jonathan.Kilpatrick@trulightconsulting.com



INSURANCE

Rogers, Gunter, Vaughn Insurance (RGV)/HUB Florida has been the endorsed agent by FSMS for over 35 years, providing specialized insurance for Surveying, Mapping, Architectural, & Engineering Firms. RGV/HUB can assist you and your firm in obtaining all lines of insurance.



Agent: Russ Browning
1117 Thomsville Road, Tallahassee, FL 32303
Office: (850) 205-0559
Mobile: (850) 545-5219
Russ.Browning@hubsinsurance.com

TITLE INSURANCE

50% off Closing Fees for members. Closing Fees waived for Active Military or Law Enforcement family members. We also offer Title Insurance and can act as your Escrow agent on all properties in the State of Florida.

Becky McNeal
Licensed FL Title Insurance Agent
1415 E. Redmont Drive, Ste. 1
Tallahassee, FL 32308
bmneal@advantagetitlegroup.com
(850) 329-6920



FLORIDA SURVEYING & MAPPING SOCIETY
1689 MAHAN CENTER BLVD., SUITE A
TALLAHASSEE, FL 32308
WWW.FSMS.ORG
850.942.1900 OFFICE
850.877.4852 FAX



2021 eLearning Courses

**6 General CEC - \$99/course (members)
\$120/course (non-members)**

- Professional Ethics & Professional Courtesy FULL video - Course #8363
- Georgia Technical Standards for Property Surveys-Course #8554
- History of Surveying - Course #7140
- Identification of Native & Non-Native Trees in Florida - Course #8132
- Ethics for the Design Professional - Course #8621
- Land Tenure & Cadastral Systems - Course #8260
- Map Projections & Plane Coordinate Systems - Course #8261
- Mean High Water Observations & Computations - Course #8262
- Public Land Survey System - Course #7147
- Remote Sensing Applications to Surveying & Mapping - Course #7148
- Practical Geometry for Surveyors - Course #7141

**3 General CEC - \$49/course (members)
\$70/course (non-members)**

- Basics of Real Property - Course #8360
- Contracts for the Professional - Course #8412
- Elevation Certificates & the Community Rating System - Course #8256
- Introduction to Photogrammetry - Course #7968
- Writing Boundary Descriptions - Course #8362

FLORIDA SURVEYING & MAPPING SOCIETY
1689 MAHAN CENTER BLVD. SUITE A
TALLAHASSEE, FL 32308
WWW.FSMS.ORG
850.942.1900 OFFICE
850.877.4852 FAX



I.F. Rooks & Associates

Geospatial Services

- **I.F. Rooks & Associates** is a full-service aerial mapping and photogrammetric firm serving clients, for over 50 years, throughout Florida and the Southeastern United States.
- We have extensive experience in providing digital orthophotos, topographic and planimetric mapping, Aerial LiDAR, fixed-wing and helicopter aerial photography for transportation, site development, coastal and environmental projects.
- Our steady growth in technology and personnel has allowed the development of long-term relationships with several Florida municipalities and government agencies, power companies, mining companies as well as engineering firms.
- I.F. Rooks is Pre-Qualified by FDOT in Workgroup 8.3 – Photogrammetry.

Office: 813.752.2113

Web: www.ifrooks.com



JAVAD

RTK
+
VRS



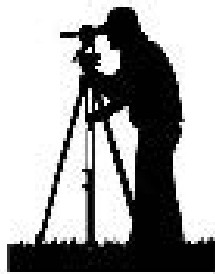
For the first time ever, JAVAD GNSS combines the strengths of **RTK** and **PPK** (onboard static processing). Take advantage of **RTPK** over the VRS network you already use!

SALES@JAVAD.COM

WWW.JAVAD.COM

Pro-Line Survey Supply

(904) 620-0500



FINALLY,

GET THE GPS ACCURACY, RELIABILITY, CANOPY PERFORMANCE, AND SUPPORT YOU NEED – GET A BRx7!

FOR HALF THE PRICE OF THE COMPETITION

Call For Our FSMS Conference Special!

Scott Griffin – Director of Sales
Carlson Software
904-553-5520
sgriffin@carlsonsw.com

Dan Woodruff – President
Carlson Preferred Solutions, LLC
352-255-1862
dwoodruff@carlsonps.com





Why Join FSMS?

- **Legislative Support** - The Legislative Committee and our Lobbyist are committed to keeping the Public and the Surveying & Mapping Profession protected
- **Educational Benefits** - With recently updated courses, getting your CEC's has never been better
- **Networking** - Attend our Annual Conference to meet other professionals and meet vendors with all the latest equipment
- **Social Benefits** - Attend local chapter meetings to meet individuals with common goals

Click Here to Join!

FLORIDA SURVEYING & MAPPING SOCIETY
1689 MAHAN CENTER BLVD., SUITE A
TALLAHASSEE, FL 32308
WWW.FSMS.ORG
850.942.1900 OFFICE
850.877.4852 FAX

2021 Committees

Standing Committees	
Nominating Committee	Lou Campanile, Jr.
Membership Committee	Earl Soeder
Finance Committee	Bon Dewitt
Executive Committee	Hal Peters
Education Committee	Greg Prather
Annual Meeting Committee	Hal Peters
Legal Committee	Jack Breed
Strategic Planning Committee	Lou Campanile, Jr.
Ethics Committee	Joe Perez
Legislative Committee	Jack Breed
Surveying & Mapping Council	Randy Tompkins
Constitution & Resolution Advisory Committee	Eric Stuart

Special Committees	
Equipment Theft	Manny Vera
Awards Committee	Don Elder
UF Alumni Recruiting Committee	Russell Hyatt
Professional Practice Committee	Lou Campanile, Jr.

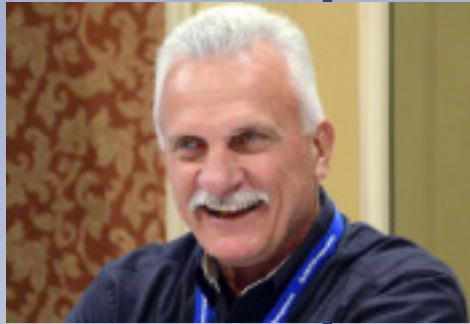
Liaisons

CST Program	Alex Jenkins
FDACS BPSM	Howard Ehmke
Surveyors in Government	Richard Allen
Academic Advisory UF	Bon Dewitt
FES	Lou Campanile, Jr.

Practice Sections

Geospatial Users Group	Earl Soeder
-------------------------------	-------------

ADMINISTRATIVE staff



Executive Director

Tom Steckler
director@fsms.org



Education Director

Rebecca Culverson
education@fsms.org



Communications Director

Vacant
communications@fsms.org



Regional Coordinator

Cathy Campanile
seminolecc84@gmail.com

The strength of the team
is each individual member.
The strength of each
member is the team.

Phil Jackson

A photograph of several volleyball players on a beach at sunset. The players are silhouetted against the bright orange and yellow sky. One player in the center is jumping high, reaching for a ball. Another player to the right is also jumping, with hands raised. Other players are visible in the background, some standing and some in motion. A volleyball net is stretched across the middle of the frame.

TEAMWORK

PassItOn.com

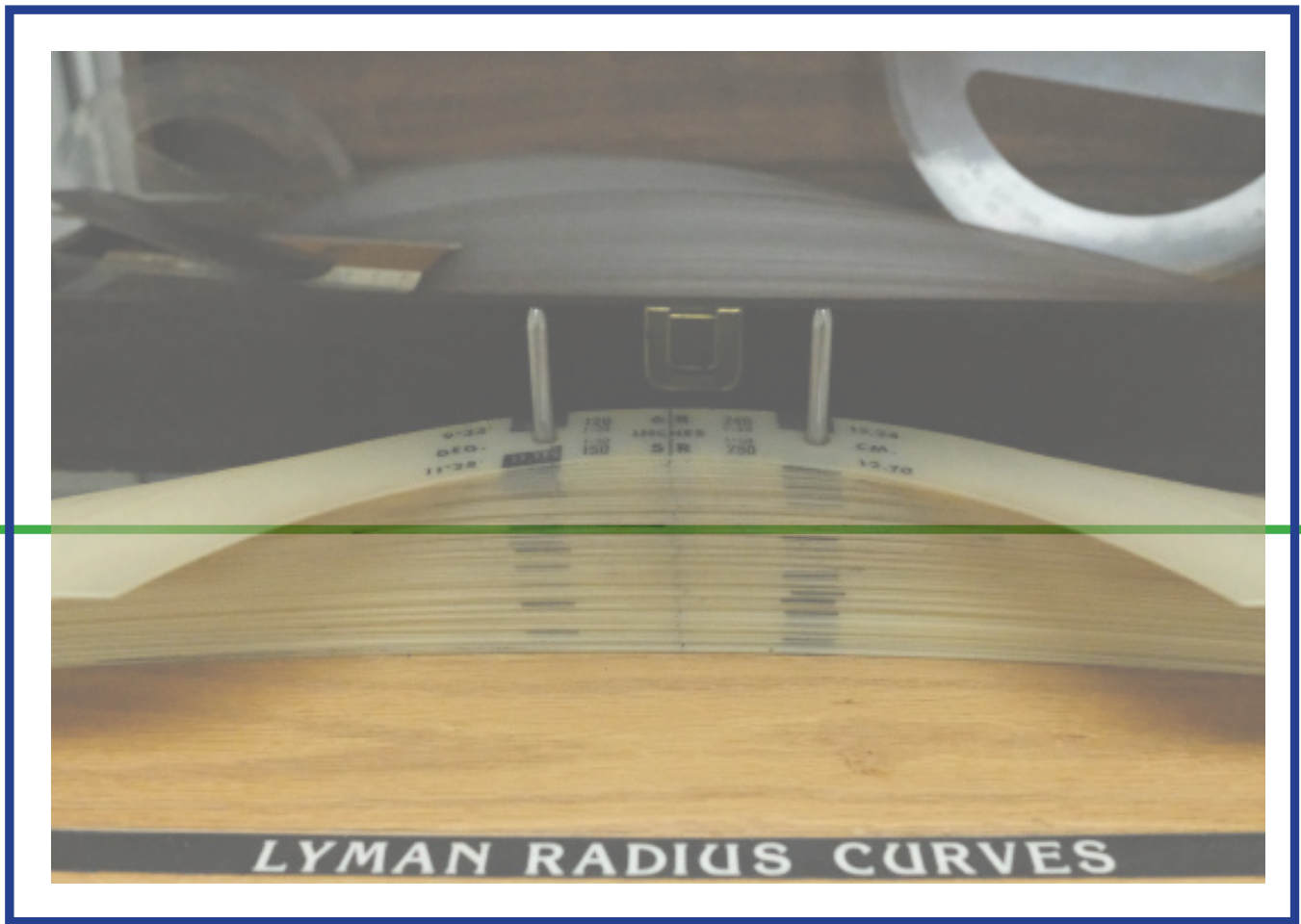
THE FOUNDATION FOR A BETTER LIFE.

The Florida Surveyor is the official publication of the Florida Surveying and Mapping Society, Inc. (FSMS). It is published monthly for the purpose of communicating with the professional surveying community and related professions who are members of FSMS. Our award winning publication informs members eleven months of the year of national, state, and district events and accomplishments as well as articles relevant to the surveying profession. The latest educational offerings are also included.



2021 Firm

Sustaining s Directory



A	
Accuright Surveys of Orlando, Inc.	407-894-6314
Agnoli, Barber & Brundage, Inc.	239-597-3111
AIM Engineering & Surveying	239-332-4569
Airworks	209-803-8274
Allen Business Advisors	781-443-4874
Allen & Company, Inc.	407-654-5355
Allen Engineering	321-783-7443
AM Engineering, Inc.	941-377-9178
American Consulting Professionals, LLC.	813-435-2600
American Surveying, Inc.	813-234-0103
Amerritt, Inc.	813-221-5200
Arc Surveying & Mapping, Inc.	904-384-8377
Ardurra, Inc.	239-292-7773
Associated Land Surveying & Mapping, Inc.	407-869-5002
Avirom & Associates, Inc.	561-392-2594
Axis Geospatial SE, LLC.	386-439-4848
Ayres Associates	715-834-3161
B	
Banks Engineering	239-939-5490
Barnes, Ferland and Associates, Inc.	407-896-8608
Barraco & Associates, Inc.	239-461-3170
Bartram Trail Surveying, Inc.	904-284-2224
BBLs Surveyors, Inc.	239-597-1315
Bello & Bello Land Surveying Corporation	305-251-9606
Benchmark Surveying & Land Planning, Inc.	850-994-4882
Berntsen International	608-443-2773
Betsy Lindsay, Inc.	772-286-5753
Biscayne Engineering Company, Inc.	305-324-7671
Boatwright and Durden Land Surveyors, Inc.	904-241-8550
Bock & Clark Corporation	330-665-4821
Bohler	561-571-0280
Bowman Consulting Group	703-464-1000
Brown & Phillips, Inc.	561-615-3988

BSE Consultants, Inc.	321-725-3674
Buchanan & Harper, Inc.	850-763-7427
Bussen-Mayer Engineering Group, Inc.	321-453-0010
C	
Calvin, Giordano, & Associates	954-921-7781
Carlson Environmental Consultants, PC	561-371-2402
Carter Associates, Inc.	772-562-4191
Caulfield & Wheeler	561-392-1991
Chastain-Skillman, Inc.	863-646-1402
Causseaux, Hewett & Walpole, Inc.	352-331-1976
CivilSurv Design Group, Inc.	863-646-4771
Clary & Associates, Inc.	904-260-2703
Clements Surveying, Inc.	941-729-6690
Coastal Engineering Associates, Inc.	352-796-9423
Collins Survey Consulting, LLC.	863-937-9052
Compass Engineering & Surveying, Inc.	727-822-4151
Compass Point Surveyors, PL	954-332-8181
County Wide Surveying, Inc.	850-769-0345
Cousins Surveyors & Associates, Inc.	954-689-7766
CPH, Inc.	407-322-6841
Craven-Thompson & Associates	954-739-6400
Cross Surveying, LLC.	941-748-8340
Culpepper & Terpening Inc.	772-464-3537
Cumbey & Fair	727-324-1070
D	
Dagostino Geospatial, Inc.	239-352-6085
DeGrove Surveyors, Inc.	904-722-0400
Dennis J. Leavy & Associates	561-753-0650
Dewberry	321-354-9729
DMK Associates, Inc.	941-475-6596
Donald W. McIntosh Associates, Inc.	407-644-4068

Donoghue Construction Layout, LLC.	321-248-7979
Douglass, Leavy & Associates, Inc.	954-344-7994
DRMP, Inc.	407-896-0594
DroneView Technologies	248-321-9417
DSW Surveying & Mapping, PLC.	352-735-3796
Duncan Parnell	407-601-5816
Durden Surveying & Mapping, Inc.	904-853-6822

E	
Echezabal & Associates, Inc.	813-933-2505
ECHO UES, Inc.	888-778-3246
Eda Consultants, Inc.	352-373-3541
E.F. Gaines Surveying Services, Inc.	239-418-0126
Eiland & Associates, Inc.	904-272-1000
Element Engineering Group, LLC.	813-386-2101
Engenuity Group, Inc.	561-655-1151
Engineering Design & Construction, Inc.	772-462-2455
ER Brownell & Associates, Inc.	305-860-3866
ESP Associates	813-295-9024
ETM Surveying & Mapping	904-642-8550
Exacta Land Surveyors, Inc.	305-668-6169
F	
Ferguson Land Surveyors	727-230-9606
First Choice Surveying, Inc.	407-951-3425
Florida Design Consultant, Inc.	727-849-7588
Florida Engineering & Surveying, LLC.	941-485-3100
F.R. Aleman & Associates, Inc.	305-591-8777
F.R.S. & Associates, Inc.	561-478-7178
FLT Geosystems	954-763-5300
Fortin, Leavy, Skiles, Inc.	305-653-4493
FTE Engineers & Planners	800-639-4851

G	
Gary Allen Land Surveying	850-877-0541
Geoline Surveying	386-418-0500
Geomatics Corporation	904-824-3086
GeoData Consultants, Inc.	407-732-6965
Geo Networking, Inc.	407-549-5075
GeoPoint Surveying, Inc.	813-248-8888
GeoSurv, LLC.	877-407-3734
George F. Young, Inc.	727-822-4317
Germaine Surveying, Inc.	863-385-6856
GPI Geospatial, Inc.	407-851-7880
Gustin, Cothorn & Tucker, Inc.	850-678-5141
H	
H.L. Bennett & Associates, Inc.	863-675-8882
Hanson Professional Services, Inc.	217-788-2450
Hanson, Walter & Associates, Inc.	407-847-9433
Hole Montes, Inc.	239-254-2000
Hyatt Survey Services	941-748-4693
I	
I.F. Rooks & Associates, LLC.	813-752-2113
J	
John Ibarra & Associates, Inc.	305-262-0400
John Mella & Associates, Inc.	813-232-9441
Johnston's Surveying, Inc.	407-847-2179

K	
KCI Technologies	954-776-1616
Keith and Associates, Inc.	954-788-3400
Kendrick Land Surveying	863-533-4874
L	
L&S Diversified, LLC.	407-681-3836
Land Precision Corporation	727-796-2737
Landmark Engineering & Surveying Corporation	813-621-7841
Langan Engineering	973-560-4900
Leading Edge Land Services, Inc.	407-351-6730
Leiter Perez & Associates	305-652-5133
Lengemann Corp.	800-342-9238
Leo Mills & Associates	941-722-2460
Long Surveying, Inc.	407-330-9717
Ludovici & Orange Consulting Engineers	305-448-1600
M	
Manuel G. Vera & Associates, Inc.	305-221-6210
Marco Surveying & Mapping, LLC.	239-389-0026
Maser Consulting, P.A.	813-207-1061
Massey-Richards Surveying & Mapping, LLC.	305-853-0066
Masteller, Moler & Taylor, Inc.	772-564-8050
McCain Mills, Inc.	813-752-6478
McKim & Creed, Inc.	919-233-8091
McLaughlin Engineering, Co.	954-763-7611
Metron Surveying and Mapping, LLC.	239-275-8575
Metzger + Willard, Inc.	813-977-6005
Mock Roos & Associates, Inc.	561-683-3113
Moore Bass Consulting, Inc.	850-222-5678
Morris-Depew Associates, Inc.	239-337-3993
Murphy's Land Surveying	727-347-8740

N	
Navigation Electronics, Inc.	337-237-1413
Northstar Geomatics, Inc.	772-485-1415
Northwest Surveying, Inc.	813-889-9236
NV5, Inc.	407-896-3317
O	
On The Mark Surveying, LLC.	321-626-6376
P	
PEC Surveying & Mapping	407-542-4967
Pennoni Associates, Inc.	215-222-3000
Pickett & Associates, Inc.	863-533-9095
Platinum Surveying & Mapping, LLC.	863-904-4699
Point Break Surveying	941-378-4797
Polaris Associates, Inc.	727-461-6113
Porter Geographical Positioning & Surveying, Inc.	863-853-1496
Pro-Line Survey Supply	904-620-0500
Pulice Land Surveyors, Inc.	954-572-1777
Q	
Q Grady Minor & Associates, PA	239-947-1144
R	
Reece & White Land Surveying, Inc.	305-872-1348
Richard P. Clarson & Associates, Inc.	904-396-2623
R.M. Barrineau & Associates, Inc.	352-622-3133
R.J. Rhodes Engineering, Inc.	941-924-1600
Robayna and Associates, Inc.	305-823-9316
Rogers, Gunter, Vaughn Insurance, Inc. (HUB FL)	850-386-1111

S	
SAM Surveying & Mapping, LLC.	850-385-1179
SCR & Associates NWFL, Inc.	850-265-6979
Sergio Redondo & Associates, Inc.	305-378-4443
Settimio Consulting Services	850-341-0507
SGC Engineering, LLC.	407-637-2588
Shah Drotos & Associates, PA	954-943-9433
Shannon Surveying, Inc.	407-774-8372
Sherco, Inc.	863-453-4113
Sliger & Associates	386-761-5385
S&ME, Inc.	407-975-1273
Southeastern Surveying & Mapping Corp.	407-292-8580
Spalding DeDecker Associates, Inc.	248-844-5400
Stephen H. Gibbs Land Surveyors, Inc.	954-923-7666
Stoner & Associates, Inc.	954-585-0997
Strayer Surveying & Mapping, Inc.	941-497-1290
Surv-Kap	520-622-6011
SurvTech Solutions, Inc.	813-621-4929
T	
T2 UES Inc.	407-629-7144
Thurman Roddenberry, & Associates	850-962-2538

U	
Upham, Inc.	386-672-9515
W	
Wade Surveying, Inc.	352-753-6511
Wallace Surveying Corp.	561-640-4551
Wantman Group Inc.	561-687-2220
WBQ Design & Engineering, Inc.	407-839-4300
Winningham & Fradley, Inc.	954-771-7440
Woolpert, Inc.	937-531-1322
Z	
ZNS Engineering, LLC.	941-748-8080

2021 Chapter Presidents

District 1

Panhandle

David Glaze
davidpga@bellsouth.net

Gulf Coast

Frederic Rankin
erankin@dewberry.com

Chipola

Jesse Snelgrove
jsnelgrove@
snelgrovesurveying.com

Northwest FL

Jeremy Fletcher
fletcher.jwf@gmail.com

District 2

FL Crown

Kathy Wade
kathy@boatwrightland.com

N. Central FL

Brian Murphy
bmurphy@3002inc.com

UF Geomatics

Evan Coleman
e.coleman@ufl.edu

District 3

Central FL

Ralph Nieto
Interim President
r.nieto6025@bellsouth.net

Indian River

Paige Rogolino
progolino@
aviromsurvey.com

Volusia

Anthony Sanzone
eastcoastland@
bellsouth.net

District 4

Ridge

Larry Sharp
lsharp@collinssurvey.com

Tampa Bay

Charlie Arnett
CArnett@
Geopointsurveying.com

District 5

Charlotte Harbor

Derek Miller
millersurveying@
comcast.net

Collier-Lee

Steve Shawles II
sshawles@haleyward.com

Manasota

Aaron Levine
aaron@msbsurveying.com

District 6

Broward

Earl Soeder
earl.soeder@
duncan-parnell.com

Palm Beach

Lee Powers
lpowers@zemangroup.com

District 7

Miami-Dade

Frank Pauas-Suiero
fpauas@gpinet.com

2021 Districts & Directors

District 1 -/Northwest

Bay, Calhoun, Escambia, Franklin, Gadsden, Madison, Okaloosa, Santa Rosa, Taylor, Wakulla, Walton, Washington

Eric Stuart
(850)857-7725
eric.stuart@sam.biz

Chad Thurner
(850) 200-2441
chad.thurner@sam.biz

District 2 / Northeast

Alachua, Baker, Bradford, Clay, Columbia, Dixie, Duval, Gilchrist, Hamilton, Lafayette, Levy, Marion, Nassau, Putnam, Suwannee, St. Johns, Union

Nick Digruzzolo
(863) 344-2330
ndigruzzolo@pickettusa.com

Randy Tompkins
(904) 755-4235
randytompkins1@outlook.com

District 3/East Central

Brevard, Flagler, Indian River, Lake, Okeechobee, Orange, Osceola, Seminole, Martin, St. Lucie, Volusia

Al Quickel
(407) 567-1566
alq.fsms@gmail.com

Howard Ehmke
(561) 682-2987
hehmke@sfwmd.gov

District 4/ West Central

Citrus, Hernando, Hillsborough, Pasco, Pinellas, Polk, Sumter

Greg Prather
(863) 533-9095
gprather@pickettusa.com

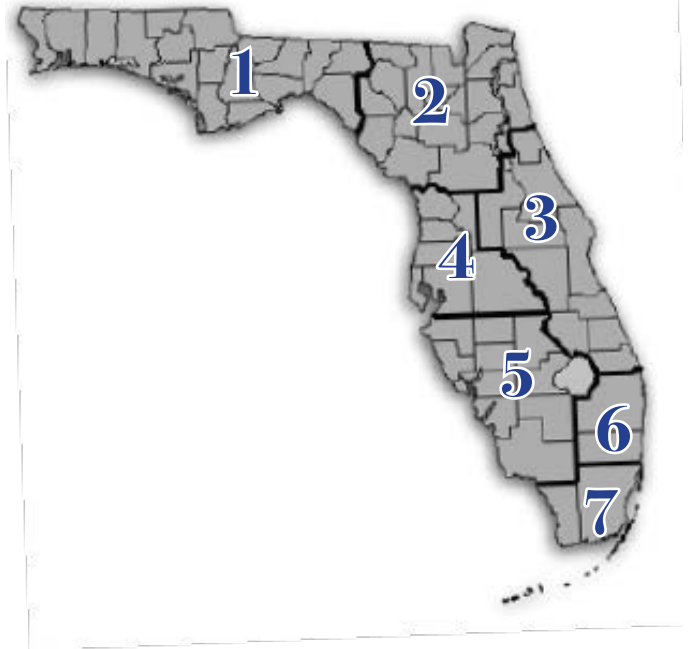
Alex Parnes
(727) 847-2411
alexwolfeparnes@gmail.com

District 5/ Southwest

Collier, Charlotte, DeSoto, Glades, Hardee, Hendry, Highlands, Lee, Manatee, Sarasota

Shane Christy
(941) 748-4693
schristy@georgeyoung.com

Jeffrey Cooner
(239) 829-7016
jeff@coonerconsulting.com



Additional Information

Past Presidents

1956

H.O. Peters
Harry C. Schwebke
John P. Goggin
R.H. Jones

1960

Hugh A. Binyon
Russell H. DeGrove
Perry C. McGriff
Carl E. Johnson
James A. Thigpenn, III
Harold A. Schuler, Jr.
Shields E. Clark
Maurice E. Berry II
William C. Hart
Frank R. Schilling, Jr.

1970

William V. Keith
James M. King
Broward P. Davis
E.R. (Ed) Brownell
E.W. (Gene) Stoner
Lewis H. Kent
Robert S. Harris
Paul T. O'Hargan
William G. Wallace, Jr.
Robert W. Wigglesworth

1980

Ben P. Blackburn
William B. Thompson, II
John R. Gargis
Robert A. Bannerman
H. Bruce Durden
Buell H. Harper
Jan L. Skipper
Steven M. Woods
Stephen G. Vrabel
W. Lamar Evers

1990

Joseph S. Boggs
Robert L. Graham
Nicholas D. Miller
Loren E. Mercer
Kent Green
Robert D. Cross
Thomas L. Conner
Gordon R. Niles, Jr.
Dennis E. Blankenship
W. Lanier Mathews, II
Jack Breed

2000

Arthur A. Mastronicola
Michael H. Maxwell
John M. Clyatt
David W. Schryver
Stephen M. Gordon
Richard G. Powell
Michael J. Whiting
Robert W. Jackson, Jr.
Pablo Ferrari
Steve Stinson

2010

Dan Ferrans
Jeremiah Slaymaker
Ken Glass
Russell Hyatt
Bill Rowe
Dale Bradshaw
Lou Campanile, Jr.
Bob Strayer, Jr.
Dianne Collins
Don Elder

Upcoming Events

*Please email
communications@fsms.org to
notify us of upcoming events -
including virtual meetings!*

Advertise With Us!

All advertisements contained within the publication are published as a service to readers. Publication of the advertisements does not imply or express any endorsement or recommendation by FSMS. The rates are as follows.

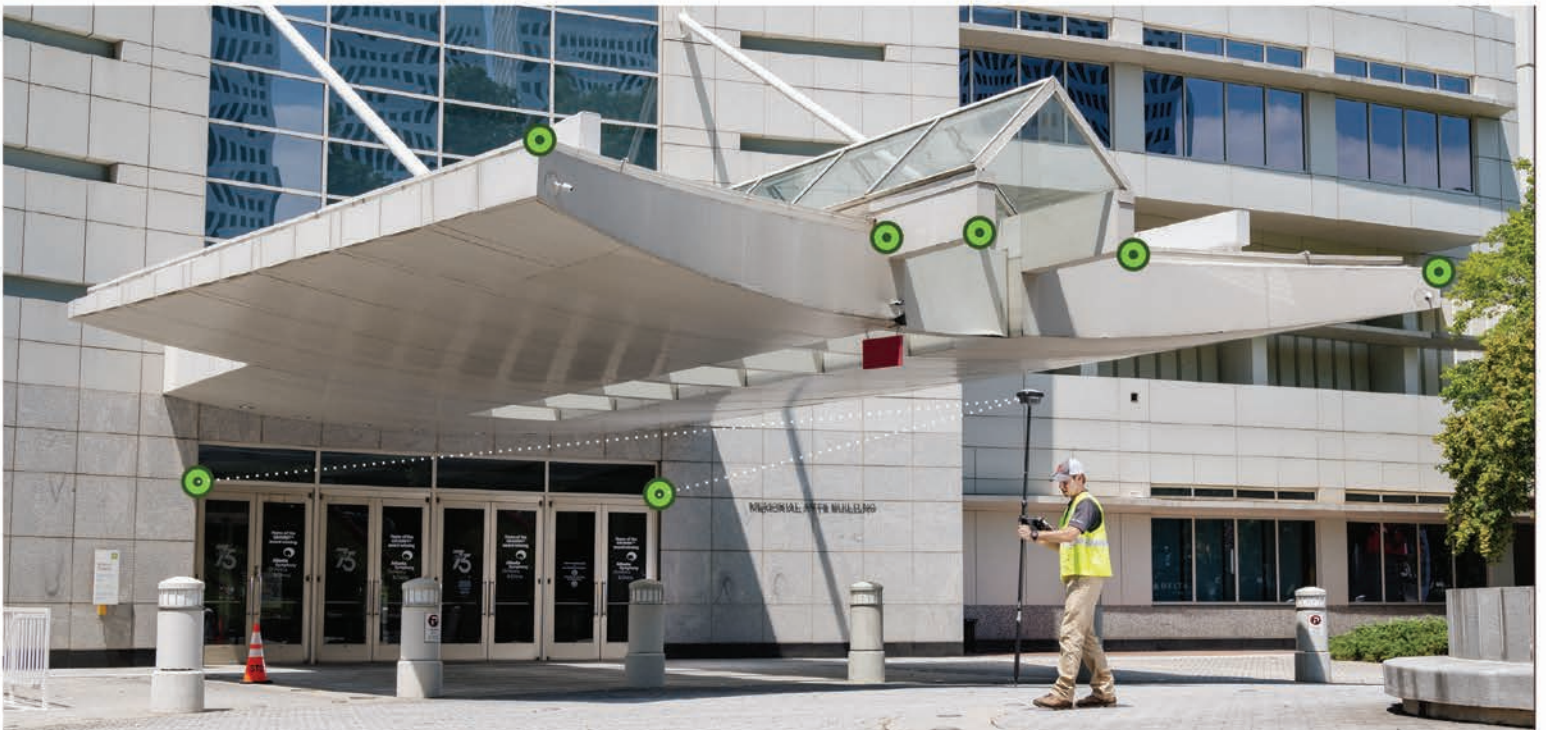
Requirements: Contracts for one year (11 issues) receive 10% discount if paid in advance; camera-ready copy (JPEG, PDF, GIF, PNG docs); new ads and/or changes are due by the 15th of each month. It is the responsibility of the client or submit new ads or changes.

Benefits: Full color; hot links to your websites added to your ad.

Size	1 Issue	2-11 Issues
Inside Front Cover	n/a	\$525/issue
Inside Back Cover	n/a	\$525/issue
Full Page	\$720	\$395/issue
1/2 Page	\$575	\$320/issue
1/4 Page	\$290	\$175/issue
Business Card	\$120	\$100/issue

A Special Thank You to Our 2021 Sponsors

**Trimble
Keith and Associates, Inc.
Miami Dade Chapter
Broward Chapter
DRMP, Inc.
Bowman Consulting Group, Ltd.
McCain Mills, Inc.
Geospatial Users Group
Collins Survey Consulting, LLC
Crown Chapter
F. R. Aleman & Associates, Inc.
Tampa Bay Chapter
Pickett & Associates, Inc
SAM Surveying and Mapping, LLC
Central FL Chapter
Langan Engineering
Manasota Chapter
Miller Surveying, Inc.
Charlotte Harbor Chapter
Collier Lee Chapter
GPI Geospatial, Inc.
Hyatt Survey Services, Inc.
Wantman Group, Inc.
Ayres Associates
Southeastern Surveying & Mapping Corporation
Manuel G. Vera & Associates, Inc.
3002 Surveying**



Leica
Geosystems

THE NEW GS18 I

The world's first GNSS smart antenna with visual positioning, redefines what an RTK rover is capable of.



www.FLTgeosystems.com



FT. LAUDERDALE
809 PROGRESSO DR., FT. LAUDERDALE, FL 33304 (954)763-5300 • FAX: (954)462-4121

1-800-327-0775

TAMPA
5468 56TH COMMERCE PARK BLVD., TAMPA, FL 33610 (813)623-3307 • FAX: (813)623-2100

1-800-282-7003

WE'RE AN EQUAL OPPORTUNITY EMPLOYER

SPRING SPECIAL

GET AN ADDITIONAL

10% OFF*

ALL STOREWIDE PURCHASES!

FOR FSMS READERS

PROMO CODE: FATHERS10

*Enter code at checkout. Applies to storewide online purchases: supplies, accessories, and instruments. Expires 6/30/21.